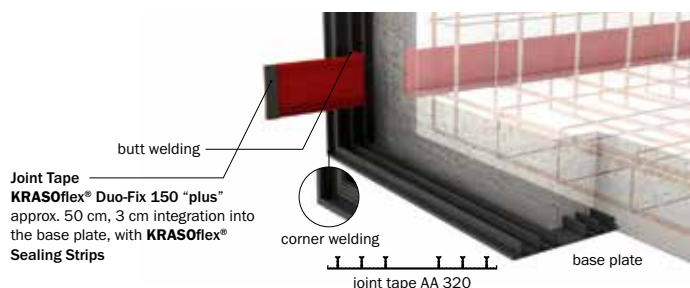


KRASOflex® Construction Joint T3 LG 4

base plate and wall continuous

corner moulding: external construction joint tape type AA 320 (under the base plate) on external construction joint tape type AA 320 (wall), and on **KRASOflex® Duo-Fix 150 "plus"** as connection pieces for surrounding **KRASOflex® Duo-Fix 150 "plus"**, anchor length 50 cm each (construction joint tapes according to factory standard, DIN 18541 and DIN 18541 BV)



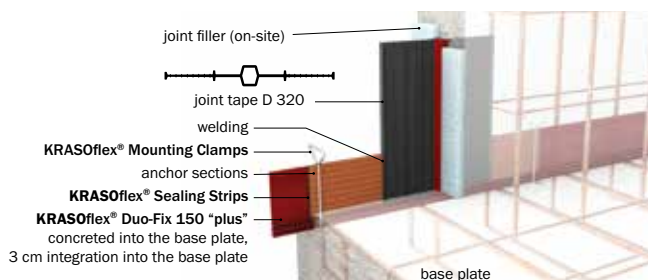
Type / Item	KRASOflex® Construction Joint T3
KRASOflex® Construction Joint T3	Prices on request

Scope of supply: KRASOflex® Construction Joint T3 incl. 2 KRASOflex® Mounting Clamps

KRASOflex® Wall Expansion Joint T4 LG 4

base plate continuous and separate wall

moulding: internal expansion joint tape type D 320 (wall) with anchor section to attach to the surrounding **KRASOflex® Duo-Fix 150 "plus"** (expansion joint tapes according to factory standard and DIN 18541)



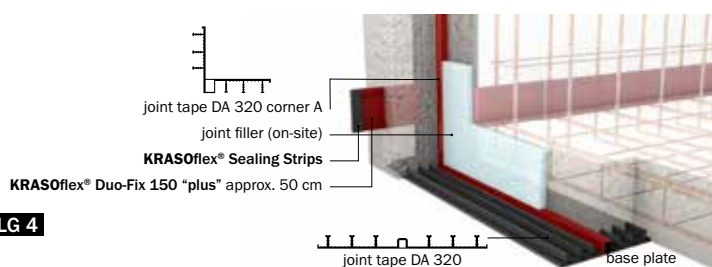
Type / Item	KRASOflex® Wall Expansion Joint T4
KRASOflex® Wall Expansion Joint T4	Prices on request

Scope of supply: KRASOflex® Wall Expansion Joint T4 incl. 2 KRASOflex® Mounting Clamps

KRASOflex® Building Expansion Joint T5 LG 4

base plate and separate wall

corner moulding: external expansion joint tape type DA 320 (under the base plate) on external expansion joint tape type DA 320 corner A (wall), and on **KRASOflex® Duo-Fix 150 "plus"** as connection pieces, for surrounding **KRASOflex® Duo-Fix 150 "plus"**, anchor lengths 50 cm each (expansion joint tapes according to factory standard, DIN 18541 and DIN 18541 BV)



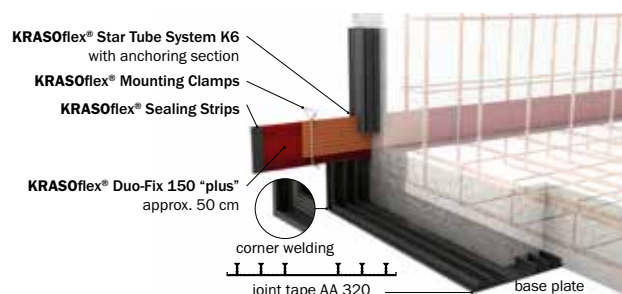
Type / Item	KRASOflex® Building Expansion Joint T5
KRASOflex® Building Expansion Joint T5	Prices on request

Scope of supply: KRASOflex® Building Expansion Joint T5 incl. 2 KRASOflex® Mounting Clamps

KRASOflex® Construction Joint T6 LG 4

base plate continuous, joint area of triple wall (desired crack)

moulding: external construction joint tape type AA 320 (under the base plate), on external construction joint tape type AA 320 (wall) and on **KRASOflex® Duo-Fix 150 "plus"** as connection pieces for surrounding **KRASOflex® Duo-Fix 150 "plus"** and for adding **KRASOflex® Star Tube System K6** (must be ordered separately), anchor lengths 50 cm each (construction joint tapes according to factory standard, DIN 18541 and DIN 18541 BV)



Type / Item	KRASOflex® Construction Joint T6
KRASOflex® Construction Joint T6	Prices on request

Scope of supply: KRASOflex® Construction Joint T6 incl. 2 KRASOflex® Mounting Clamps