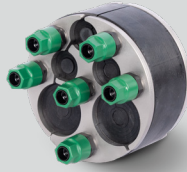


KRASO® Sealing Insert Universal  
Multiple - split - 100  
Design 1



KRASO® Sealing Insert Universal  
Multiple - split - 100  
Design 2



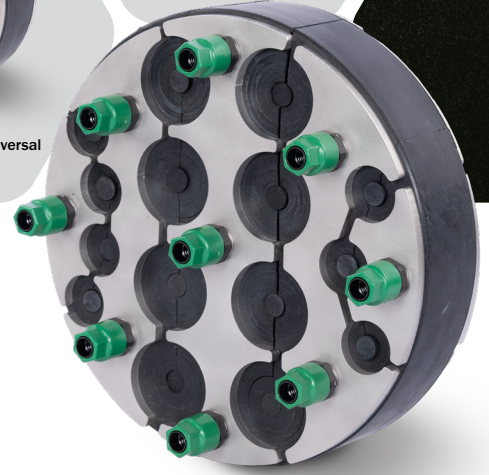
KRASO® Sealing Insert Universal  
Multiple - split - 100  
Design 3



KRASO® Sealing Insert Universal  
Multiple - split - 150  
Design 2



KRASO® Sealing Insert Universal  
Multiple - split - 150  
Design 1



KRASO® Sealing Insert Universal  
Multiple - split - 200  
Design 2

Stepless onion  
ring technology!



## KRASO® Sealing Insert Universal Multiple - split - Universally usable – multiply flexible

- + For core drillings and casings
- + Stepless onion ring technology: universally usable for various external diameters of media lines/cables - also for multiple installation! Split design for retrofit installation!
- + **KRASO® Sealing Insert quality:** 5 mm thick clamping plates made of non-corrosive stainless steel V2A, 40 mm seal made of specially developed rubber mixture, welded-on studs instead of through bolts
- + **Torque Control Nut KRASO® DKM:** integrated torque limiter - no torque wrench required!
- + MPA-tested: protects reliably against pressing water up to 2.5 bar!
- + Gas- and odour-tight – high-quality in terms of TA-Air!
- + Radon tightness IAF tested - meets the requirements for radon precautionary areas according to FHRK leaflet MB 101!
- + Certified with the quality seal of the FHRK e. V.
- + DafStB waterproof concrete guideline: stress class 1 + 2

### KRASO® Sealing Insert Universal Multiple - split - **LG 1**

for the installation of several media lines/cables, split design for retrofit installation | DafStB waterproof concrete guideline: stress class 1 + 2

Item	KRASO® Sealing Insert Universal Multiple - split -			
	100	125	150	200
Core drilling / casing in mm	100	125	150	200
stepless onion ring technology: external cable diameter from ... to ... in mm				
Design 1	4 x 6 - 33 mm or blind	6 x 6 - 28 mm or blind	3 x 6 - 52 mm or blind	3 x 6 - 28 mm or blind 4 x 6 - 52 mm or blind
Design 2	3 x 6 - 18 mm or blind 2 x 6 - 33 mm or blind	-	4 x 6 - 18 mm or blind 6 x 6 - 33 mm or blind	7 x 6 - 18 mm or blind 8 x 6 - 33 mm or blind
Design 3	8 x 6 - 18 mm or blind	-	6 x 6 - 38 mm or blind	-
<b>KRASO® Sealing Insert Universal Multiple - split -</b>	<b>107 €</b>	<b>115 €</b>	<b>162 €</b>	<b>251 €</b>

Further arrangements available at short notice!