



**KRASO® Cable Penetration KDS**  
Check the installation video  
(Just scan the QR code!)



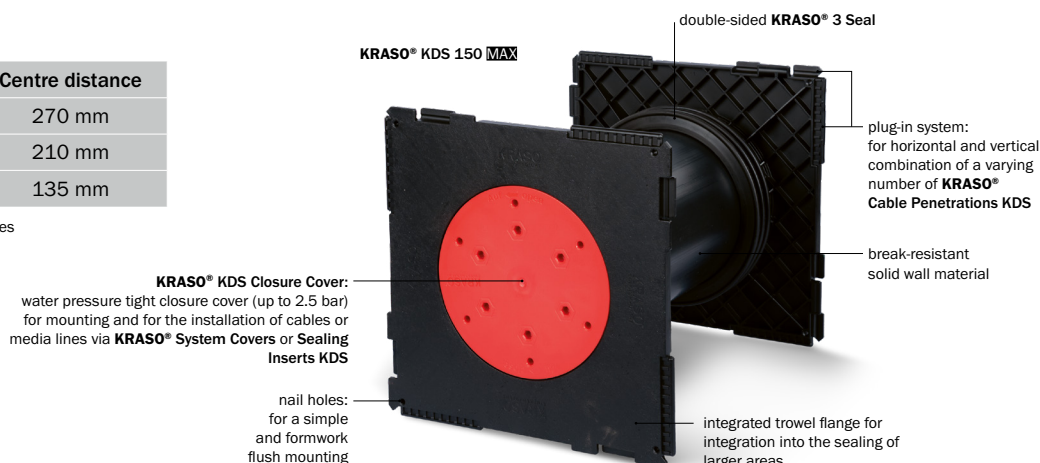
## KRASO® Cable Penetration KDS

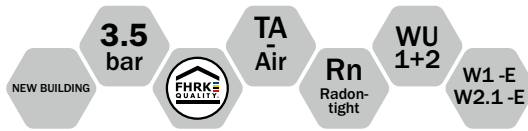
### Compatible, tight, secure - the double wall penetration system

- + Compatible with all other current systems!
- + Tight due to our water pressure tight **KRASO® 4 Seal** (KDS 90) or double-sided **KRASO® 3 Seal** (KDS 150)
- + Secure due to break-resistant solid wall material!
- + The intelligent, all-purpose and flexible cable penetration system for complex new buildings: public buildings, hospitals, technical-scientific institutions or in the industrial and commercial sector
- + With plug-in system on both sides for forming packages! Horizontal and vertical combination possible!
- + **KRASO® KDS 150 MAX** with integrated trowel flange (5 cm) for integration into the sealing of larger areas according to DIN 18533 W1 -E and W2.1 -E and larger centre distance (270 mm) for the reinforcement.
- + Optimised for the installation in precast walls
- + Certified with the quality seal of the FHRK e. V.
- + The matching accessories for every purpose!
- + DafStB waterproof concrete guideline: stress class 1 + 2

	Centre distance
<b>KRASO® KDS 150 MAX</b>	270 mm
<b>KRASO® KDS 150</b>	210 mm
<b>KRASO® KDS 90</b>	135 mm

centre distances when forming packages





## KRASO® Cable Penetration KDS 150 double wall penetration **LG 1**

cable penetration system for concreting, for in-situ concrete walls or precast walls, with double-sided gas- and water pressure tight surrounding **KRASO® 3 Seal**, with plug-in system on both sides for forming packages, for the later installation of media lines using a **KRASO® System Sealing Insert** (not included in the scope of supply) or for connecting empty pipe hoses using **KRASO® System Cover** (not included in the scope of supply) | DafStB waterproof concrete guideline: stress class 1 + 2, **KRASO® KDS 150 MAX** with integrated trowel flange DIN 18533 W1 -E and W2.1 -E

Item	KRASO® KDS 150 double wall penetration											
Available standard wall thicknesses in cm	15	17.5	20	24	25	30	35	36.5	40	45	50	
<b>KRASO® KDS 150 double wall penetration</b>	<b>39 €</b>											
<b>KRASO® KDS 150 MAX double wall penetration</b>	<b>46 €</b>											

**Scope of supply:** KRASO® Cable Penetration KDS 150 double wall penetration, 2 KDS closure covers

**Further wall thicknesses available on request!**



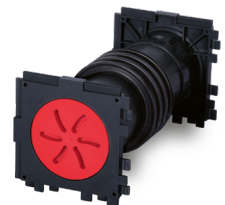
## KRASO® Cable Penetration KDS 150 single wall penetration **LG 1**

cable penetration system for concreting, for in-situ concrete walls or precast walls, with gas- and water pressure tight surrounding **KRASO® 3 Seal** and KDS closure covers, with plug-in system on one side for forming packages, for the later installation of media lines using a **KRASO® System Sealing Insert** (not included in the scope of supply) or for connecting empty pipe hoses using **KRASO® System Cover** (not included in the scope of supply) | DafStB waterproof concrete guideline: stress class 1 + 2, **KRASO® KDS 150 MAX** with integrated trowel flange DIN 18533 W1 -E and W2.1 -E

Item	KRASO® KDS 150 single wall penetration												
Available standard wall thicknesses in cm	10	12	15	17.5	20	24	25	30	35	36.5	40	45	50
<b>KRASO® KDS 150 single wall penetration</b>	<b>34 €</b>												
<b>KRASO® KDS 150 MAX single wall penetration</b>	<b>39 €</b>												

**Scope of supply:** KRASO® Cable Penetration KDS 150 single wall penetration, KDS closure covers, **KRASO® Cover** as an installation aid

**Further wall thicknesses available on request!**



## KRASO® Cable Penetration KDS 90 double wall penetration **LG 1**

cable penetration system for concreting, with gas- and water pressure tight surrounding **KRASO® 4 Seal**, with plug-in system on both sides for forming packages, for the later installation of media lines using a **KRASO® System Sealing Insert** (not included in the scope of supply) or for connecting empty pipe hoses using **KRASO® System Cover** (not included in the scope of supply) | DafStB waterproof concrete guideline: stress class 1 + 2

Item	KRASO® KDS 90 double wall penetration												
Available standard wall thicknesses in cm	12	15	17.5	20	24	25	30	35	36.5	40	45	50	
<b>KRASO® KDS 90 double wall penetration</b>	<b>34 €</b>												

**Scope of supply:** KRASO® Cable Penetration KDS 90 double wall penetration, 2 KDS closure covers

**Further wall thicknesses available on request!**