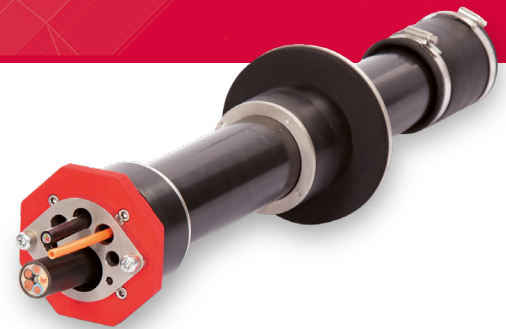


## Single utility connection for buildings with basement

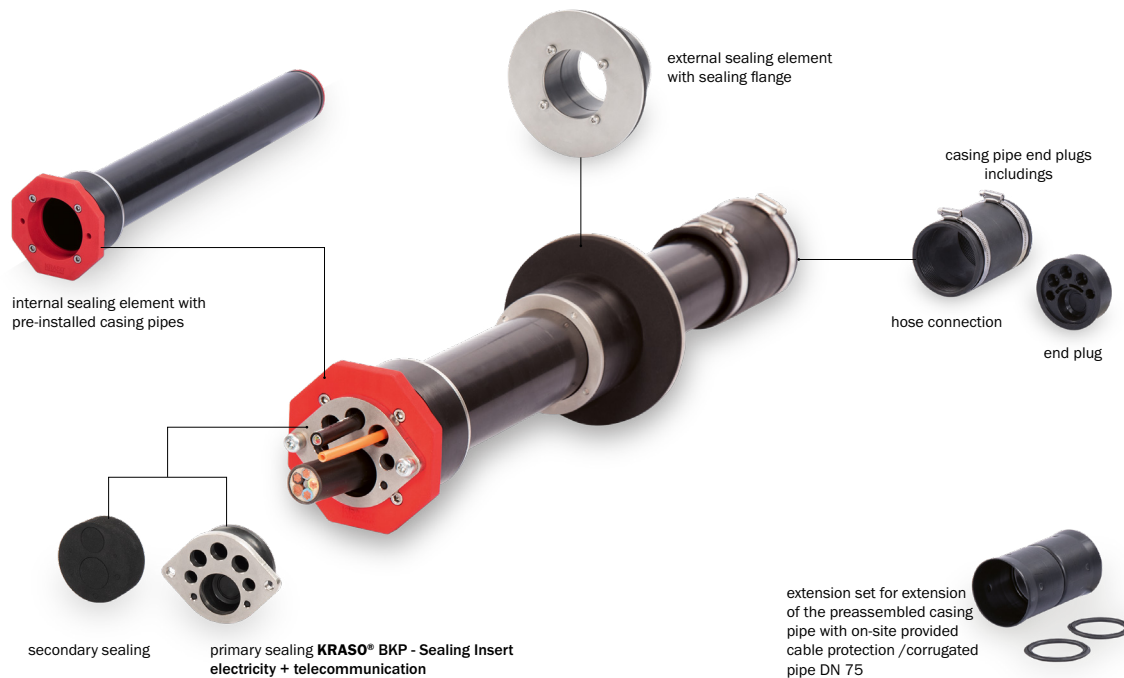


**KRASO® Builder's Convenience Box  
- wall - ESH**  
Check the installation video  
(Just scan the QR code!)



## **KRASO® Builder's Convenience Box - wall - ESH** Convenient, safe, tight connection to the network – gas, water, electricity or telecommunication

- + Simple and safe single utility connection for new buildings or rehabilitation for buildings with basement
- + Flexible installation: gas, water, electricity or telecommunication – including installation / mounting set
- + Double installation possible: electricity and telecommunication!
- + DVGW-certified according to VP 601: complete system is gas- and water pressure tight up to 1 bar!
- + For core drilling and casing DN 100 (99 - 103 mm). For precast walls and in-situ concrete walls!
- + For wall thicknesses from 160 – 500 mm
- + Tight in waterproof concrete structures with stress class 1 (permanently or temporarily pressing water)
- + External sealing element with sealing flange according to DIN 18533! Seal width: 80 mm
- + Radon tightness IAF tested - according to FHRK leaflet MB 101! Resistant to methane gas!
- + Gas- and odour-tight – high-quality in terms of TA-Air!
- + Split end plugs for easy installation!
- + Including extension set
- + DafStB waterproof concrete guideline: stress class 1 + 2, DIN 18533 W1 -E and W2.1 -E



## KRASO® Builder's Convenience Box - wall - ESH **LG5**

(including installation set)

single utility connection for supply lines (gas, water, electricity or telecommunication) for buildings with basement, incl. extension set  
 | DafStB waterproof concrete guideline: stress class 1 + 2, DIN 18533 W1 -E and W2.1 - E

Item	KRASO® BKP - wall - ESH
Wall thickness from ... to ... in mm	160 - 500
Diameter casing or core drilling min ... max ... in mm	99 - 103
Length complete system in mm	630
Length x width internal sealing element in mm	120 x 120
Seal width internal sealing element in mm	40
Diameter external sealing element with flange seal in mm	160
Seal width external sealing element with flange seal in mm	80
Internal diameter casing pipe in mm	68
External diameter casing pipe in mm	75
<b>KRASO® BKP - wall - ESH</b>	<b>277 €</b>

**Scope of supply:** KRASO® Builder's Convenience Box - wall - ESH including

- internal sealing element with pre-assembled casing pipe incl. protective cover for the installation of supply lines such as gas, water, electricity or telecommunication
  - external sealing element
  - installation instructions **KRASO® BKP - wall - ESH**
- **KRASO® BKP - wall - ESH - Extension Set** including
  - double sleeve DN 75
  - 2 x sealing ring
  - lubricant

as well as one of the following, optionally available installation kits or BKP gas installation kits:

- **KRASO® BKP - Sealing Insert - electricity/water**  
 with stepless onion ring technology 26 - 50 mm or blind
  - primary sealing + secondary sealing electricity/water
  - casing pipe end plugs including:
    - end plug electricity/water - split -
    - hose connection 80
- **KRASO® BKP - Sealing Insert - telecommunication** -  
 clamping range: 5 - 13 mm, 3 x 7 - 13 mm, 13 - 21 mm
  - primary sealing + secondary sealing telecommunication
  - casing pipe end plugs including:
    - end plug telecommunication - split -
    - hose connection 80

- **KRASO® BKP - Sealing Insert - electricity + telecommunication** -  
 clamping range: electricity 25 - 36 mm /  
 telecommunication 2 x 5 - 10 mm, 3 x 7 - 14 mm
  - primary sealing + secondary sealing electricity + telecommunication
  - casing pipe end plugs including:
    - end plug electricity + telecommunication
    - hose connection 80
  - a tube of lubricant

- Schuck DN 25 consists of primary and secondary sealing as well as gas end plug
- RMA DN 25 consists of primary and secondary sealing as well as gas end plug
- Voigt DN 25 consists of primary and secondary sealing as well as gas end plug
- Voigt DN 32 consists of primary and secondary sealing as well as gas end plug

**Further wall thicknesses available on request!**