

... for more than 40 years +

KRASO[®]
SIMPLE + TIGHT

Moulded Parts

KRASOflex[®] Construction Joint Tape ASI

internal construction joint tape, inside stabilised acc. to factory standard with ABP (general building authority test certificate)

| DafStB waterproof concrete guideline:
stress class 1 + 2



Moulded part 1
Crossing flat



Moulded part 2
T-joint flat



Moulded part 3
Flat corner



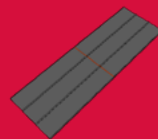
Moulded part 4
Vertical crossing



Moulded part 5
T-joint vertical

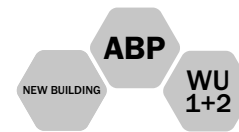
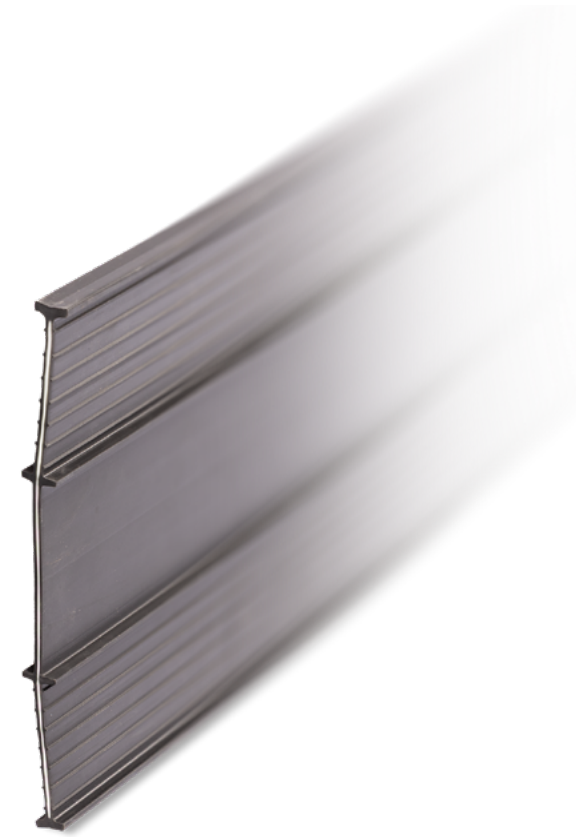


Moulded part 6
Vertical corner



Moulded part 7
Butt joint

All rights to the drawings and designs are the property of KRASO GmbH & Co. KG. •
Reproduction and distribution of the drawings as well as any other use require our written consent. •
The provisions of the currently valid ABP* (general building authority test certificate) always apply.

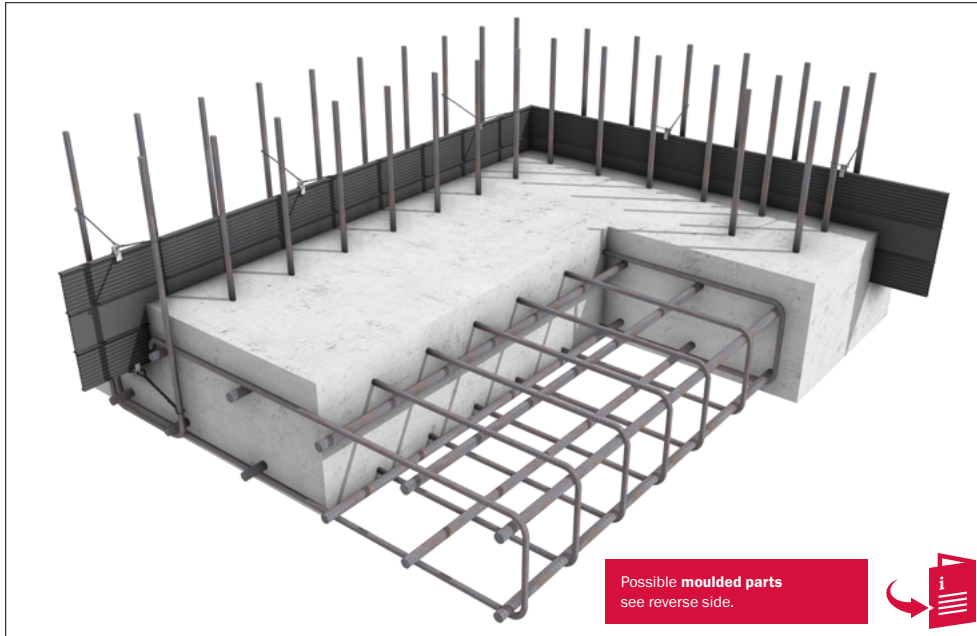


KRASOflex[®] Construction Joint Tape ASI
Installation instructions



KRASO GMBH & CO. KG
Baumannweg 1 | DE-46414 Rhede
T +49(0)28 72 - 95 35-0
info@kraso.de | **KRASO**.de

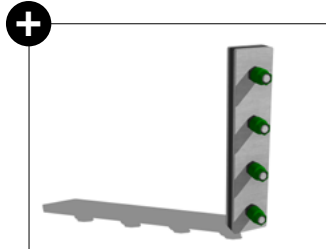
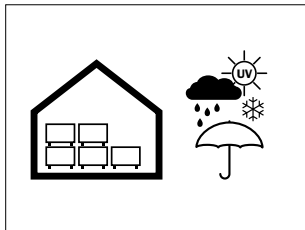
8.16.4.2-MA.EN-v1.0-03.26-RSc.DK



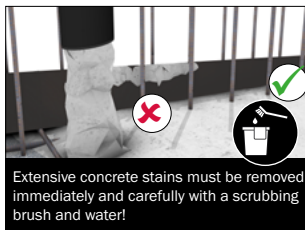
KRASOflex® Construction Joint Tape ASI

internal construction joint tape, inside stabilised according to factory standard with general building authority test certificate (ABP)
 | DafStB waterproof concrete guideline: stress class 1 + 2

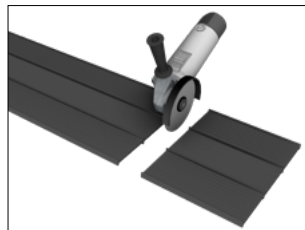
Storage and accessories



Processing



Extensive concrete stains must be removed immediately and carefully with a scrubbing brush and water!



- Joint tape positioning acc. to ABP and DIN18197:
- Integration depth ½ joint tape width
 - Distance between anchor ribs or from the head of the locking anchors of the joint tape to the nearest reinforcement layer: **20 mm**
 - Distance between the connection reinforcement and internal construction joint tapes: **50 mm**
 - Distance to component edge: **80 mm**

