

... for more than 40 years +

All rights to the drawings and designs are the property of KRASO GmbH & Co. KG. •
Reproduction and distribution of the drawings as well as any other use require our written consent. •

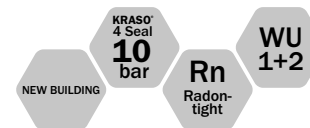


KRASO GMBH & CO. KG
Baumannweg 1 | DE-46414 Rhede
T +49(0) 28 72 - 95 35 - 0
info@kraso.de | **KRASO.de**

5.39.1-MA.EN-v1.0-09.25-RSc.DK

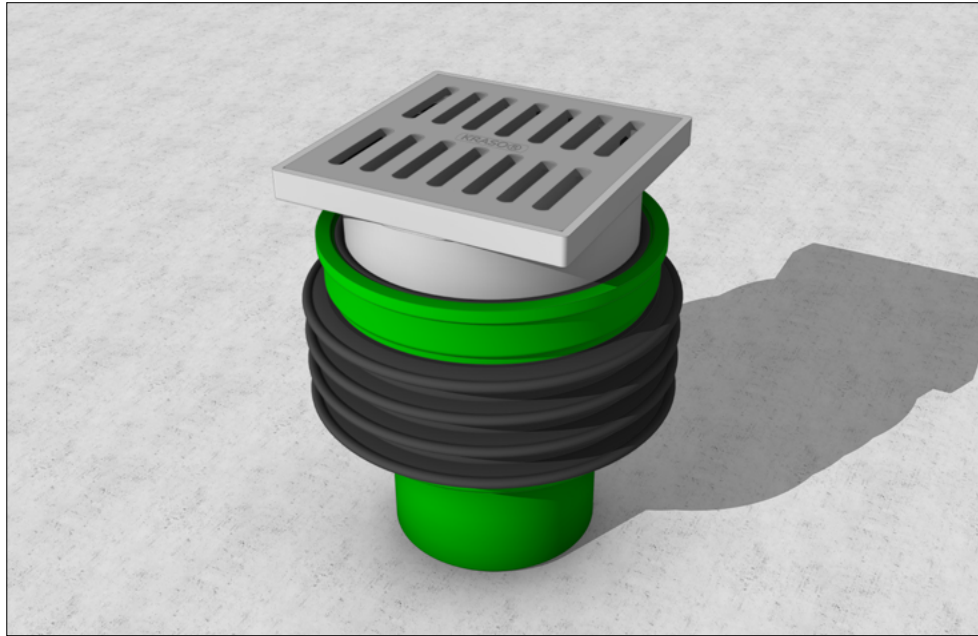
KRASO[®]

SIMPLE + TIGHT



KRASO[®] Floor Drain for KG 2000

Installation instructions



KRASO® Floor Drain for KG 2000

According to DIN EN 1253 – for the installation in interior areas without traffic, for the drainage of grey water, drainage capacity: 1.79 l/s, with water pressure tight surrounding, thermally welded **KRASO® 4 Seal**
| DafStB waterproof concrete guideline: stress class 1 + 2

1. **KRASO®** Floor Drain for KG 2000 has two connection options for DN 50 and DN 110 pipes. Apply lubricant to the **KRASO®** Floor Drain for KG 2000 and insert into the main pipe.
2. Insert **KRASO®** Cover as building period protective cover.
3. Insert support cages and upper reinforcement. TEUF = top edge unfinished floor.
4. Concrete base plate.
5. Remove the **KRASO®** Cover, clean the lip ring (if necessary).
6. Apply lubricant to insert frame and lip ring and plug them together.
7. Insert the insert frame extension (at floor level >7 cm) with attached insert frame into **KRASO®** Floor Drain for KG 2000. TEFF = top edge finished floor.
8. (If necessary,) remove insert frame extension, shorten to the required length, sharpen and re-insert.
9. Align the insert frame in the desired position.
10. Construction of the floor.
11. Install sludge trap filter and plastic grate in the insert frame.

