

... for more than 40 years +

All rights to the drawings and designs are the property of KRASO GmbH & Co. KG. •  
Reproduction and distribution of the drawings as well as any other use require our written consent. •



**KRASO GMBH & CO. KG**  
Baumannweg 1 | DE-46414 Rhede  
T +49(0) 28 72 - 95 35 - 0  
info@kraso.de | **KRASO.de**

5.38.1-MA.EN-v1.0-09.25-RSc.DK

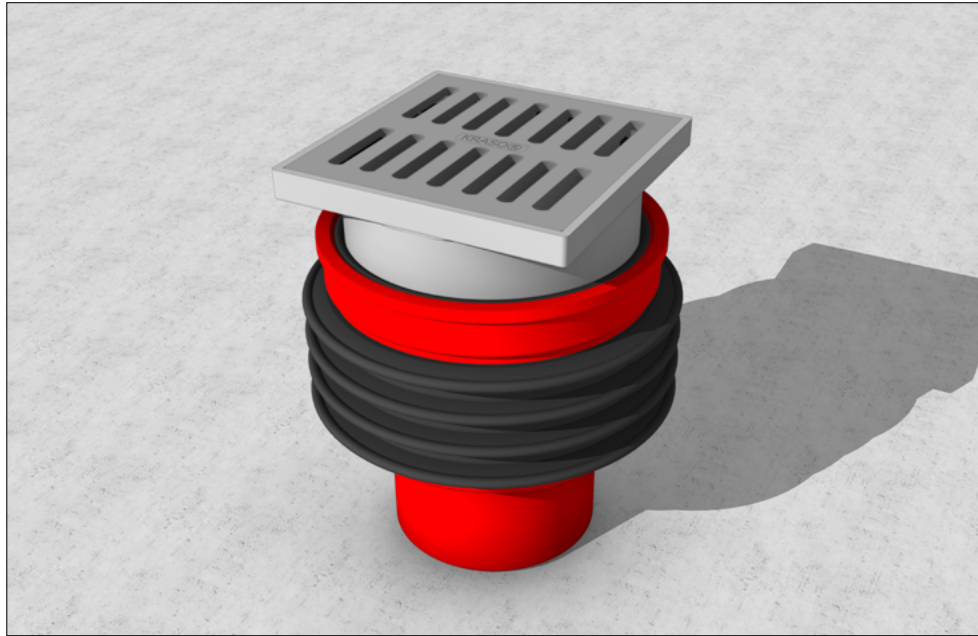
# KRASO®

SIMPLE + TIGHT



## KRASO® Floor Drain

### Installation instructions



## KRASO® Floor Drain

According to DIN EN 1253 - for the installation in interior areas without traffic, for the drainage of grey water, drainage capacity: 1.79 l/s, with water pressure tight surrounding **KRASO® 4 Seal**.

| DafStB waterproof concrete guideline: stress class 1 + 2

1. The **KRASO®** Floor Drain has two connection options for DN 50 and DN 110 pipes. Apply lubricant to the **KRASO®** Floor Drain and insert into the main pipe.
2. Insert **KRASO®** Cover as building period protective cover.
3. Insert support cages and upper reinforcement. TEUF = top edge unfinished floor.
4. Concrete base plate.
5. Remove the **KRASO®** Cover, clean the lip ring (if necessary).
6. Apply lubricant to insert frame and lip ring and plug them together.
7. Insert the insert frame extension (at floor level >7 cm) with attached insert frame into **KRASO®** Floor Drain. TEFF = top edge finished floor.
8. (If necessary,) remove insert frame extension, shorten to the required length, sharpen and reinsert.
9. Align the insert frame in the desired position.
10. Construction of the floor.
11. Install sludge trap filter and plastic grate in the insert frame.

