

... for more than 40 years +

All rights to the drawings and designs are the property of KRASO GmbH & Co. KG. •  
Reproduction and distribution of the drawings as well as any other use require our written consent. •

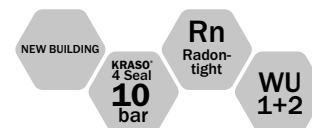


**KRASO GMBH & CO. KG**  
Baumannweg 1 | DE-46414 Rhede  
T +49(0) 28 72 - 95 35 - 0  
info@kraso.de | **KRASO.de**

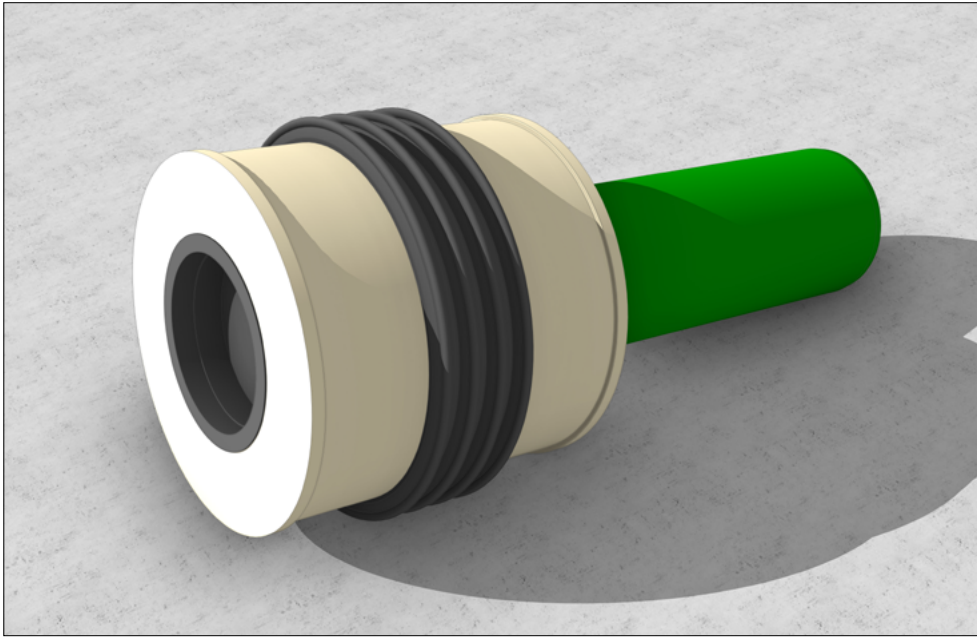
5.3-MA.EN-v1.0-08.25-RSc.DK

# KRASO<sup>®</sup>

SIMPLE + TIGHT



**KRASO<sup>®</sup> Floor Penetration Type BDF**  
- thermally insulated -  
Installation instructions



## KRASO® Floor Penetration Type BDF - thermally insulated -

For connection to KG/HT pipes or KG 2000 lines, with thermally insulated body surrounding approx. 5 cm,

**KRASO® Cover** as an installation aid

| DafStB waterproof concrete guideline: stress class 1 + 2

1. Shorten the **KRASO® Floor Penetration Type BDF - thermally insulated** - to the required length and chamfer the cut.
2. Apply lubricant to the **KRASO® Floor Penetration Type BDF - thermally insulated** - and insert into the main pipe.
3. Insert support cages and upper reinforcement. TEUF = top edge unfinished floor.
4. Concrete base plate.
5. Remove the **KRASO® Cover**.
6. Clean the lip ring (if necessary).

