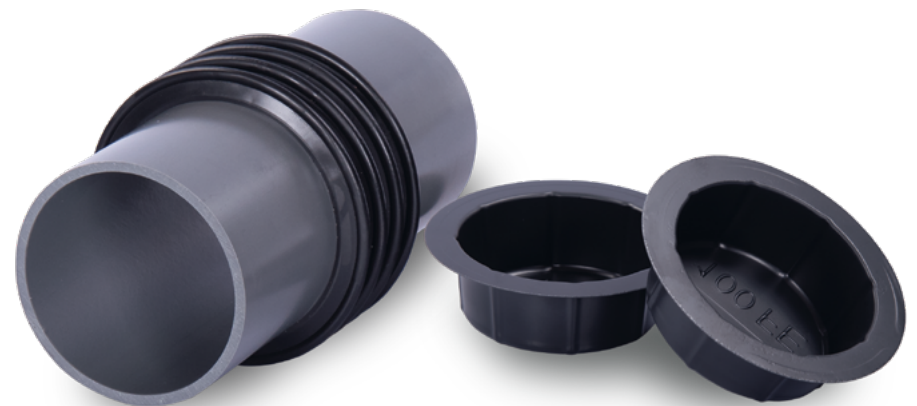


... for more than 40 years +

KRASO®

SIMPLE + TIGHT



All rights to the drawings and designs are the property of KRASO GmbH & Co. KG. •
Copying and distribution of the drawings as well as any other use require our written consent. •



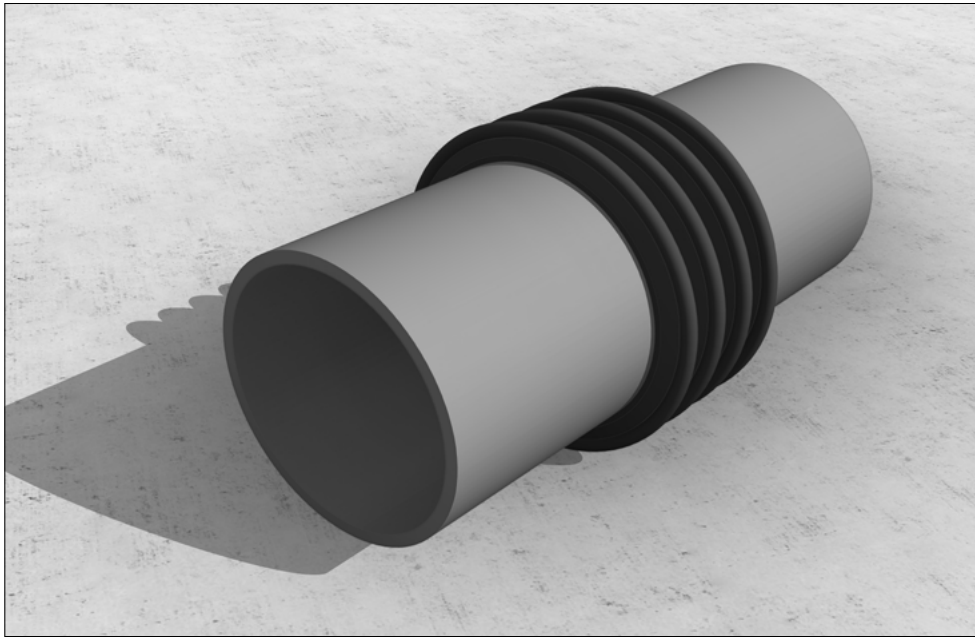
KRASO GMBH & CO. KG
Baumannweg 1 | DE-46414 Rhede
T +49 (0) 28 72 - 95 35 - 0
info@kraso.de | **KRASO.de**

5.27.1-MA.EN-v1.0-06.25-RSc.DK



KRASO® Casing Type FE

Installation instructions



KRASO® Casing Type FE - true diameter casing

recess for retrofit installation of cables or pipes using a sealing insert (not included in the scope of supply),

ID = InternalDiameter true diameter casing

| DafStB waterproof concrete guideline: stress class 1 + 2

1. Nail the **KRASO®** Cover using a hammer.
2. Lay the reinforcement. Make sure the concrete covers the area of the penetration.
3. Place the **KRASO®** Casing Type FE on the **KRASO®** Cover.
4. If necessary: fix the **KRASO®** Casing Type FE to the reinforcement. **Important:** the wire must not be fixed to the **KRASO®** 4 Seal.
5. Close the **KRASO®** Casing Type FE using the **KRASO®** Cover.
6. Formwork and ensure sufficient distance to the tie points.
7. Concrete wall. To avoid segregation in the area of the penetration, the free fall height of the concrete must not exceed 1 metre. *
8. Remove formwork.

