

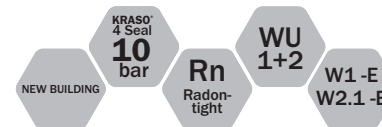
... for more than 40 years +

KRASO®

SIMPLE + TIGHT



All rights to the drawings and designs are the property of KRASO GmbH & Co. KG. •
Reproduction and distribution of the drawings as well as any other use require our written consent. •

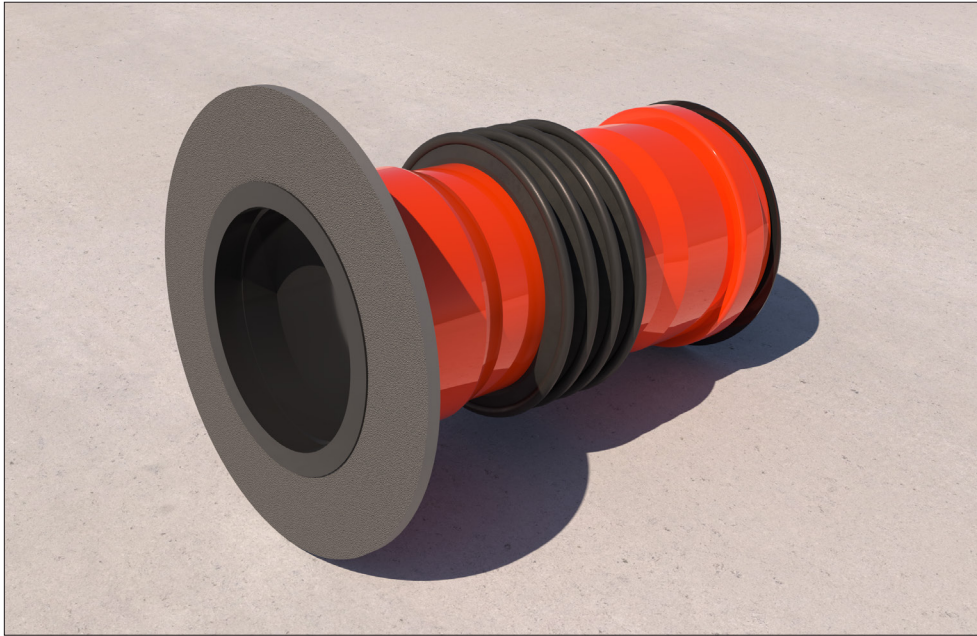


KRASO® Wall Penetration Type B/SF 5 Installation instructions



KRASO GMBH & CO. KG
Baumannweg 1 | DE-46414 Rhede
T +49(0)28 72 - 95 35-0
info@kraso.de | **KRASO.de**

5.19-MA.EN-v1.0-05.26-RSc.DK



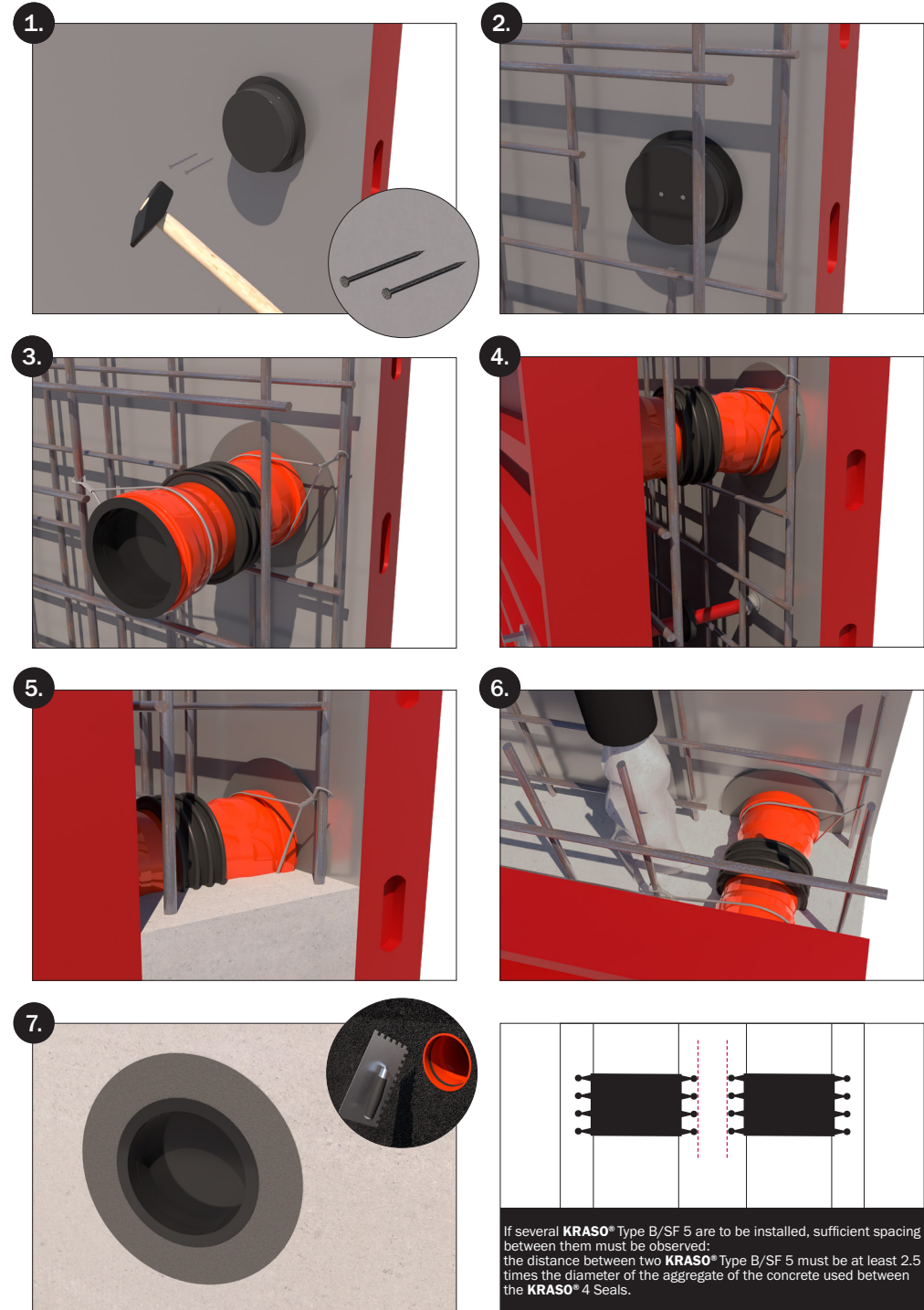
KRASO® Wall Penetration Type B/SF 5

For installation in waterproof concrete walls for connection to KG/HT pipes on both sides, with trowel flange on one side, roughened (**KRASO® Type B/SF 5 - R**) or tissue coated (**KRASO® Type B/SF 5 - G**) for the secure connection of bitumen thick coating (e.g. KMB) and reactive sealings, surrounding approx. 5 cm, formed plug-in sleeve on both sides and 2 **KRASO® Covers** as an installation aid
 | DafStB waterproof concrete guideline: stress class 1 + 2

Installation example:

KRASO® Wall Penetration Type B/SF 5 - roughened, trowel flange facing the outside of the building.

1. Nail on the **KRASO®** Cover using a hammer.
2. Lay the reinforcement. Make sure the concrete covers the area of the penetration.
3. Place the **KRASO®** Wall Penetration Type B/SF 5 on the **KRASO®** Cover.
If necessary: fix the **KRASO®** Wall Penetration Type B/SF 5 to the reinforcement.
Important: the wire must not be fixed to the **KRASO®** 4 Seal.
4. Formwork and ensure sufficient distance to the tie points.
Lay the reinforcement. Make sure the concrete covers the area of the penetration.
5. Concrete wall.
6. To avoid segregation in the area of the penetration, the free fall height of the concrete must not exceed 1 m.
7. Remove formwork. Clean the trowel flange. Apply area sealing according to manufacturer's instructions.



If several **KRASO®** Type B/SF 5 are to be installed, sufficient spacing between them must be observed:
 the distance between two **KRASO®** Type B/SF 5 must be at least 2.5 times the diameter of the aggregate of the concrete used between the **KRASO®** 4 Seals.