

... for more than 40 years +

KRASO®

SIMPLE + TIGHT



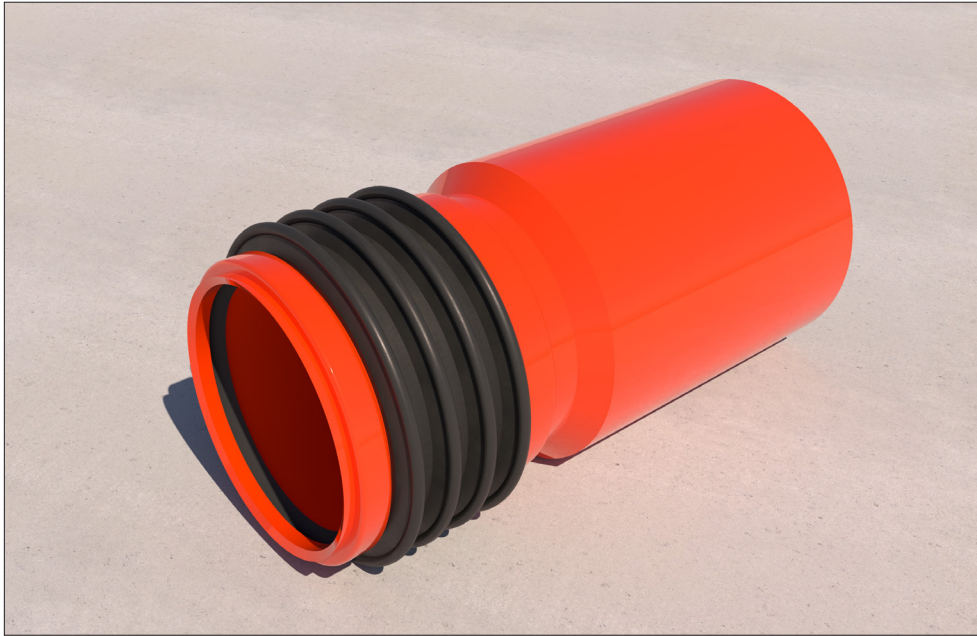
KRASO® Wall Penetration Type FR Installation instructions

All rights to the drawings and designs are the property of KRASO GmbH & Co. KG. •
Reproduction and distribution of the drawings as well as any other use require our written consent. •



KRASO GMBH & CO. KG
Baumannweg 1 | DE-46414 Rhede
T +49(0)28 72 - 95 35-0
info@kraso.de | **KRASO.de**

5.14-MA.EN-v1.0-05.26-RSc.DK

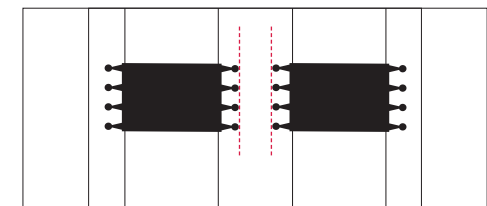
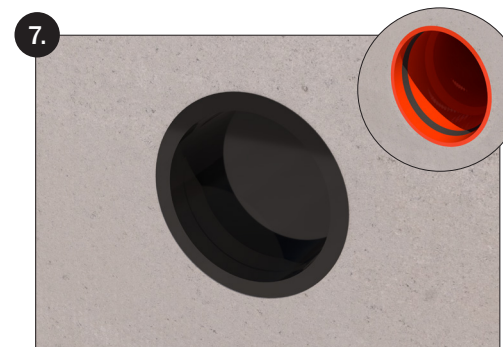
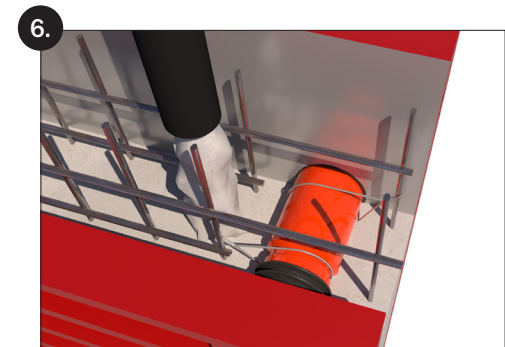
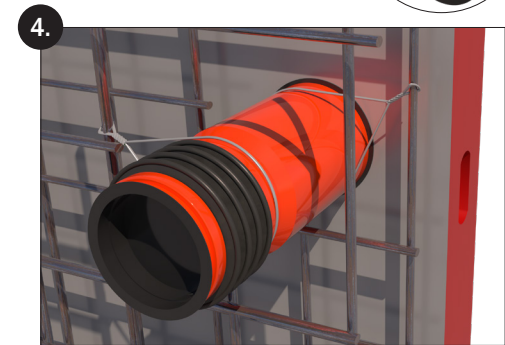
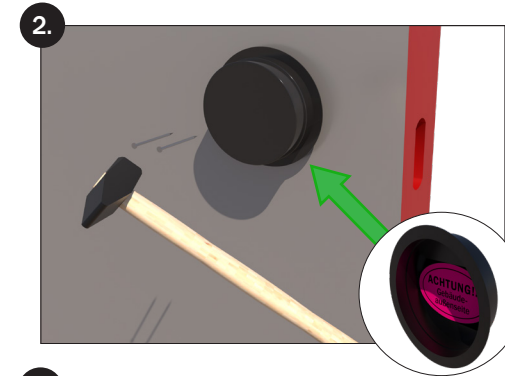
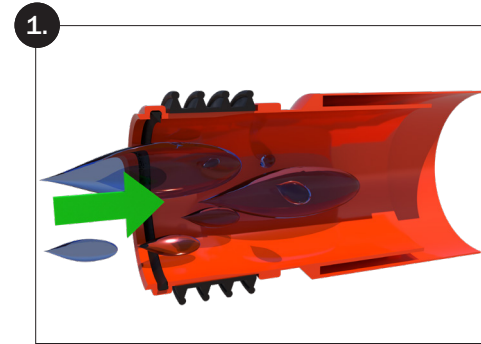


KRASO® Wall Penetration Type FR

In accordance with DIN EN 1401, for connection to KG/HT pipes on both sides, with water pressure tight surrounding **KRASO® 4 Seal**

| DafStB waterproof concrete guideline: stress class 1 + 2

1. Please note the direction of flow. The **KRASO®** Covers are marked: "Gebäudeaußenseite" = exterior of the building / "Gebäudeinnenseite" = interior of the building.
2. Nail on the **KRASO®** Cover using a hammer.
3. Lay the reinforcement. Make sure the concrete covers the area of the penetration.
4. Place the **KRASO®** Wall Penetration Type FR on the **KRASO®** Cover. If necessary: fix the **KRASO®** Wall Penetration Type FR to the reinforcement. **Important:** the wire must not be fixed to the **KRASO® 4 Seal**.
5. Formwork and ensure sufficient distance to the tie points. Concrete wall.
6. To avoid segregation in the area of the penetration, the free fall height of the concrete must not exceed 1 m.
7. Remove formwork. Remove **KRASO®** Cover and clean the lip ring (if necessary).



If several **KRASO®** Wall Penetrations Type FR are to be installed, sufficient spacing between them must be observed: the distance between two **KRASO®** Wall Penetrations Type FR must be at least 2.5 times the diameter of the aggregate of the concrete used between the **KRASO® 4 Seals**.