

... for more than 40 years +

KRASO®

SIMPLE + TIGHT



All rights to the drawings and designs are the property of KRASO GmbH & Co. KG. •
Reproduction and distribution of the drawings as well as any other use require our written consent. •

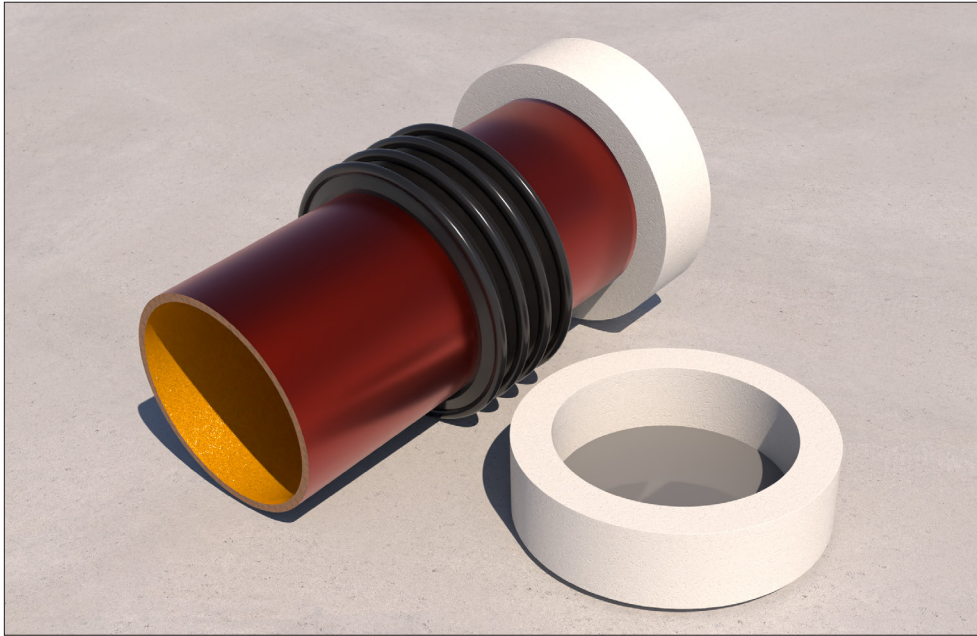


KRASO® Wall Penetration Type SML Installation instructions



KRASO GMBH & CO. KG
Baumannweg 1 | DE-46414 Rhede
T +49(0)28 72 - 95 35-0
info@kraso.de | **KRASO.de**

5.13-MA.EN-v1.0-05.26-RSc.DK

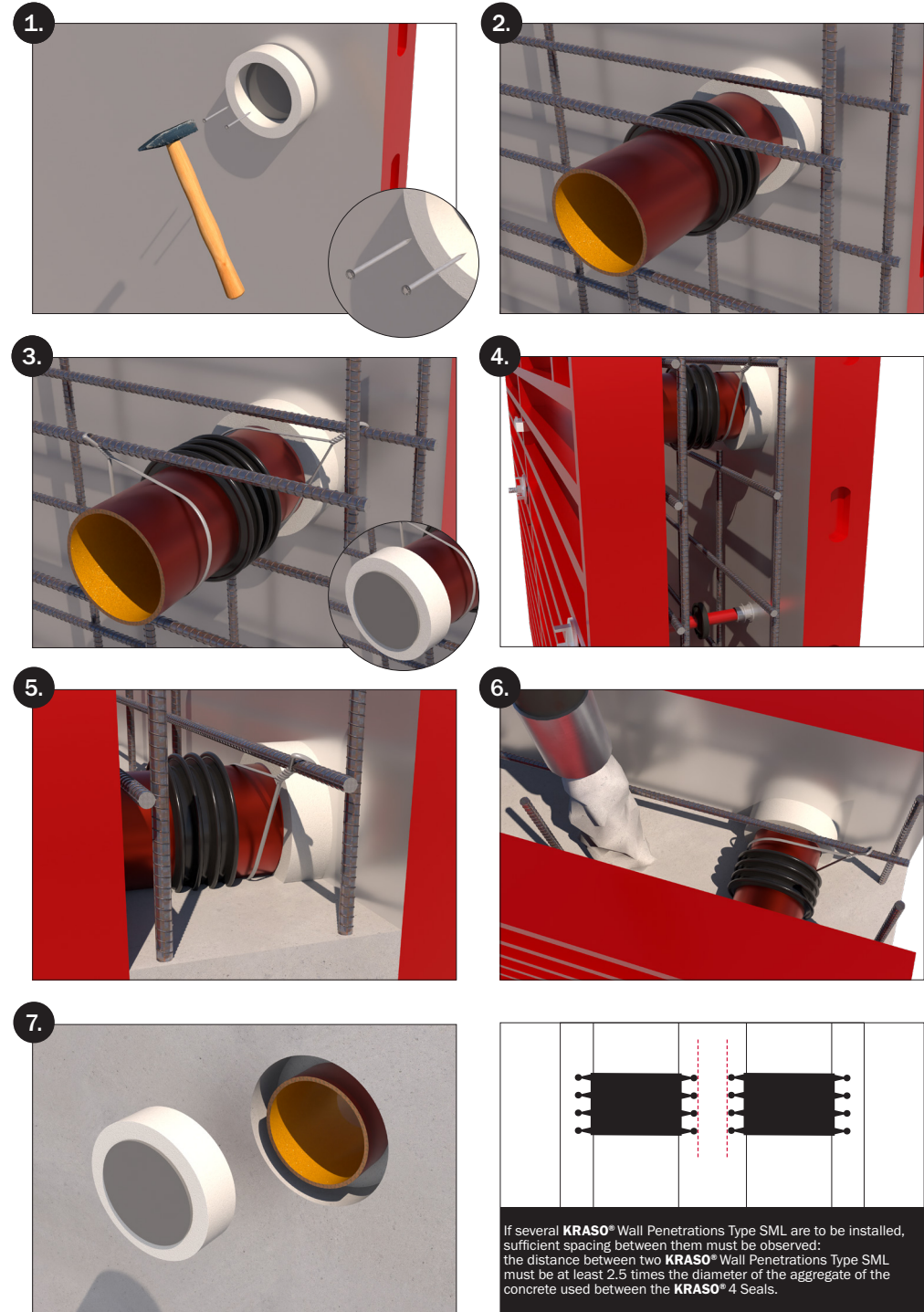


KRASO® Wall Penetration Type SML

Grey iron waste water pipe according to DIN EN 877 for installation in waterproof concrete walls for connection to SML pipes on both sides, with water pressure tight surrounding **KRASO® 4 Seal** and styrofoam recess core on both sides

| DafStB waterproof concrete guideline: stress class 1 + 2

1. Nail on the styrofoam recess core using a hammer.
2. Place the **KRASO®** Wall Penetration Type SML on the styrofoam recess core. Lay the reinforcement. Make sure the concrete covers the area of the penetration.
3. If necessary: fix the **KRASO®** Wall Penetration Type SML to the reinforcement. **Important:** the wire must not be fixed to the **KRASO® 4 Seal**. Close the **KRASO®** Wall Penetration Type SML using the styrofoam recess core.
4. Formwork and ensure sufficient distance to the tie points. Lay the reinforcement. Make sure the concrete covers the area of the penetration.
5. Concrete wall.
6. To avoid segregation in the area of the penetration, the free fall height of the concrete must not exceed 1 m.
7. Remove formwork. Remove styrofoam recess core.



If several **KRASO®** Wall Penetrations Type SML are to be installed, sufficient spacing between them must be observed: the distance between two **KRASO®** Wall Penetrations Type SML must be at least 2.5 times the diameter of the aggregate of the concrete used between the **KRASO® 4 Seals**.