

... for more than 40 years +

KRASO®

SIMPLE + TIGHT



All rights to the drawings and designs are the property of KRASO GmbH & Co. KG. •
Reproduction and distribution of the drawings as well as any other use require our written consent. •

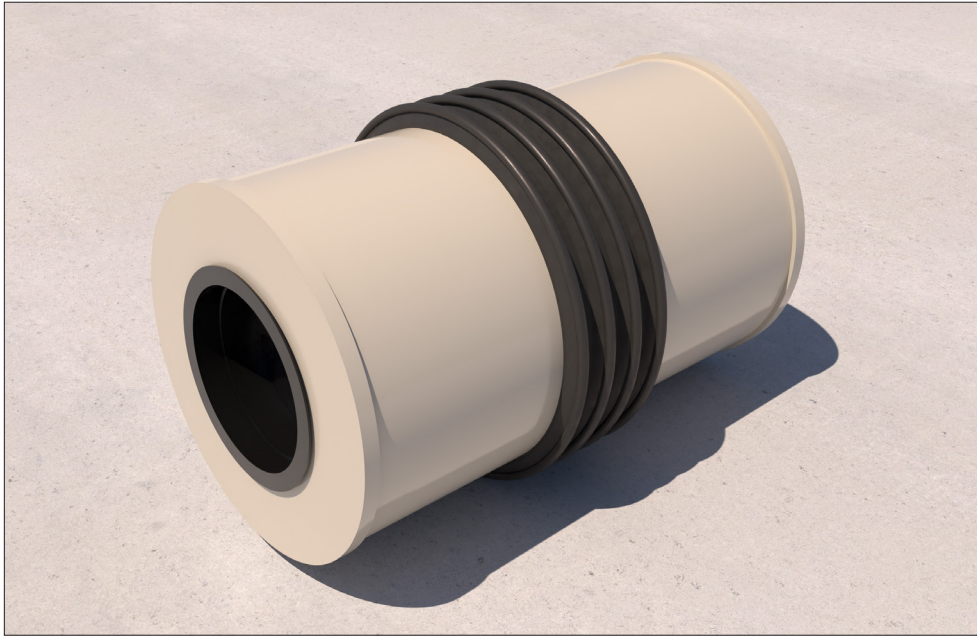


KRASO® Wall Penetration Type B - thermally insulated - Installation instructions



KRASO GMBH & CO. KG
Baumannweg 1 | DE-46414 Rhede
T +49(0)28 72 - 95 35-0
info@kraso.de | **KRASO.de**

5.12-MA.EN-v1.0-05.26-RSc.DK



KRASO® Wall Penetration Type B - thermally insulated -

In accordance with DIN EN 14758, for installation in waterproof concrete walls for connection to KG/HT pipes on both sides, with thermally welded **KRASO® 4 Seal**, formed plug-in sleeve on both sides, 2 **KRASO® Covers** as an installation aid and thermally insulated body surrounding approx. 5 cm

| DafStB waterproof concrete guideline: stress class 1 + 2

1. Nail on the **KRASO® Cover** using a hammer.
2. Lay the reinforcement. Make sure the concrete covers the area of the penetration.
3. Place the **KRASO® Wall Penetration Type B - thermally insulated -** on the **KRASO® Cover**.
If necessary: fix the **KRASO® Wall Penetration Type B - thermally insulated -** to the reinforcement.
Important: the wire must not be fixed to the **KRASO® 4 Seal**.
4. Formwork and ensure sufficient distance to the tie points.
Lay the reinforcement. Make sure the concrete covers the area of the penetration.
5. Concrete wall.
6. To avoid segregation in the area of the penetration, the free fall height of the concrete must not exceed 1 m.
7. Remove formwork.

