

... for more than 40 years +

KRASO®

SIMPLE + TIGHT

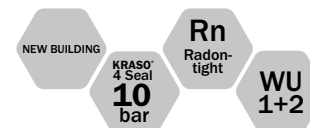


All rights to the drawings and designs are the property of KRASO GmbH & Co. KG. •
Reproduction and distribution of the drawings as well as any other use require our written consent. •



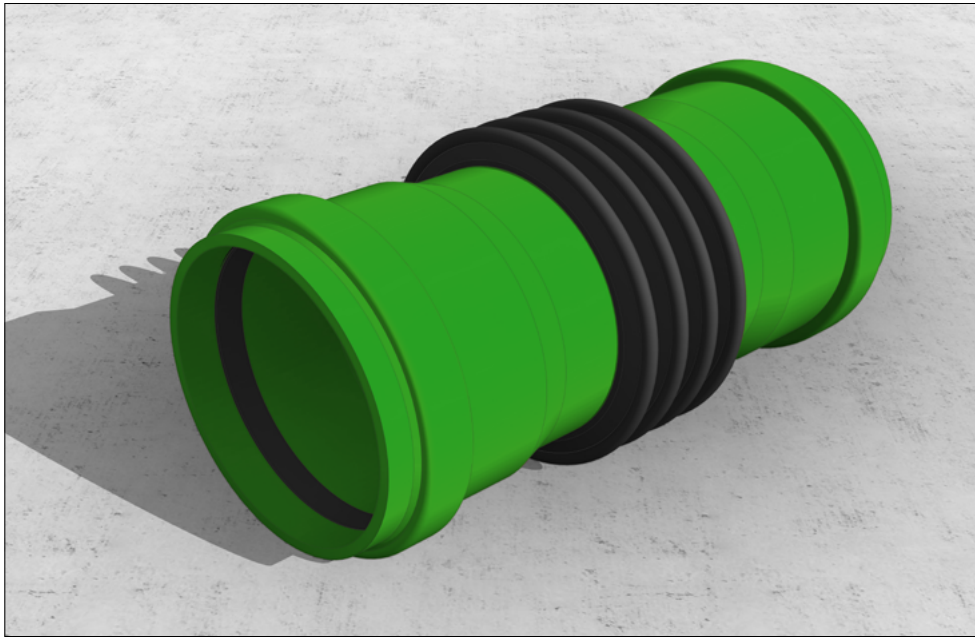
KRASO GMBH & CO. KG
Baumannweg 1 | DE-46414 Rhede
T +49 (0) 28 72 - 95 35 - 0
info@kraso.de | **KRASO.de**

5.11-MA.EN-v1.0-07.25-RSc.DK



KRASO® Wall Penetration Type B for KG 2000

Installation instructions



KRASO® Wall Penetration Type B for KG 2000

In accordance with DIN EN 14758, for installation in waterproof concrete walls for connection to KG 2000 pipes, with water pressure tight surrounding, thermally welded **KRASO® 4 Seal**, formed plug-in sleeves on both sides, 2 **KRASO® Covers** as an installation aid

| DafStB waterproof concrete guideline: stress class 1 + 2

1. Nail on the **KRASO® Cover** using a hammer.
2. Lay the reinforcement. Make sure the concrete covers the area of the penetration.
3. Place the **KRASO® Wall Penetration Type B** on the **KRASO® Cover**.
4. If necessary: fix the **KRASO® Wall Penetration Type B** to the reinforcement. **Important:** the wire must not be fixed to the **KRASO® 4 Seal**.
5. Close the **KRASO® Wall Penetration Type B** using the **KRASO® Cover**.
6. Formwork and ensure sufficient distance to the tie points.
7. Concrete wall. To avoid segregation in the area of the penetration, the free fall height of the concrete must not exceed 1 m. *
8. Remove formwork.
9. Remove the **KRASO® Cover** and clean the lip ring (if necessary).

