

... for more than 40 years +

All rights to the drawings and designs are the property of KRASO GmbH & Co. KG. •
Reproduction and distribution of the drawings as well as any other use require our written consent. •

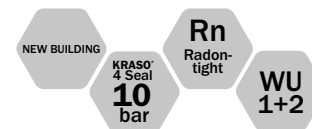


KRASO GMBH & CO. KG
Baumannweg 1 | DE-46414 Rhede
T +49 (0) 28 72 - 95 35 - 0
info@kraso.de | **KRASO.de**

5.10-MA.EN-v1.0-07.25-RSc.DK

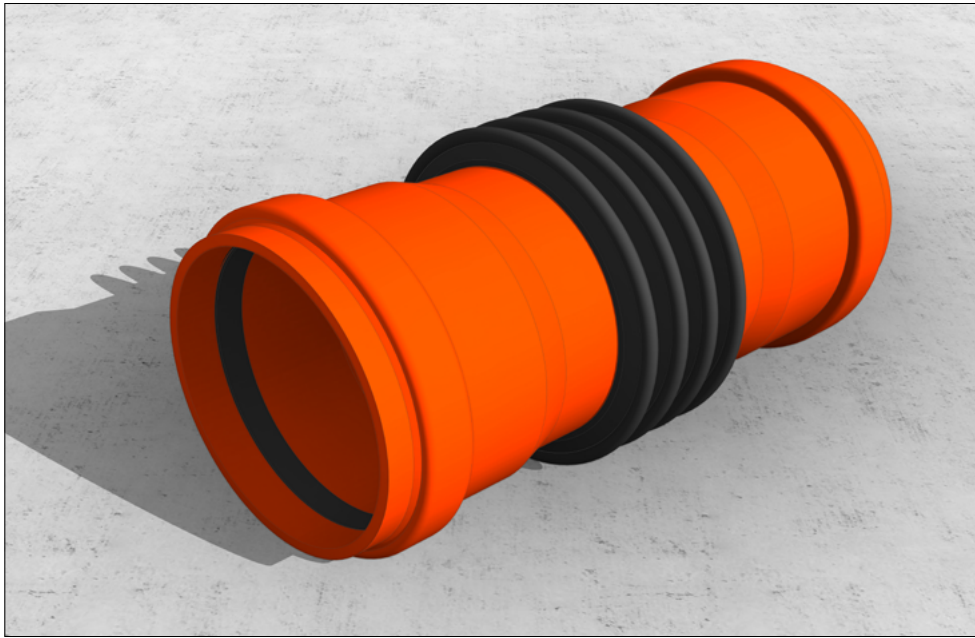
KRASO[®]

SIMPLE + TIGHT



KRASO[®] Wall Penetration Type B

Installation instructions



KRASO® Wall Penetration Type B

In accordance with DIN EN 1401, for connection to KG/HT pipes on both sides, with water pressure tight surrounding **KRASO® 4 Seal**

| DafStB waterproof concrete guideline: stress class 1 + 2

1. Nail on the **KRASO®** Cover using a hammer.
2. Lay the reinforcement. Make sure the concrete covers the area of the penetration.
3. Place the **KRASO®** Wall Penetration Type B on the **KRASO®** Cover.
4. If necessary: fix the **KRASO®** Wall Penetration Type B to the reinforcement. **Important:** the wire must not be fixed to the **KRASO® 4 Seal**.
5. Close the **KRASO®** Wall Penetration Type B using the **KRASO®** Cover.
6. Formwork and ensure sufficient distance to the tie points.
7. Concrete wall. To avoid segregation in the area of the penetration, the free fall height of the concrete must not exceed 1 m. *
8. Remove formwork.
9. Remove the **KRASO®** Cover and clean the lip ring (if necessary).

