

... for more than 40 years +

All rights to the drawings and designs are the property of KRASO GmbH & Co. KG. •  
Reproduction and distribution of the drawings as well as any other use require our written consent. •

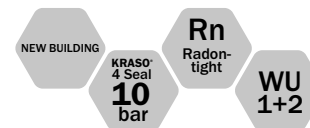


**KRASO GMBH & CO. KG**  
Baumannweg 1 | DE-46414 Rhede  
T +49 (0) 28 72 - 95 35 - 0  
info@kraso.de | **KRASO.de**

5.1.1-MA.EN-v1.0-07.25-RSc.DK

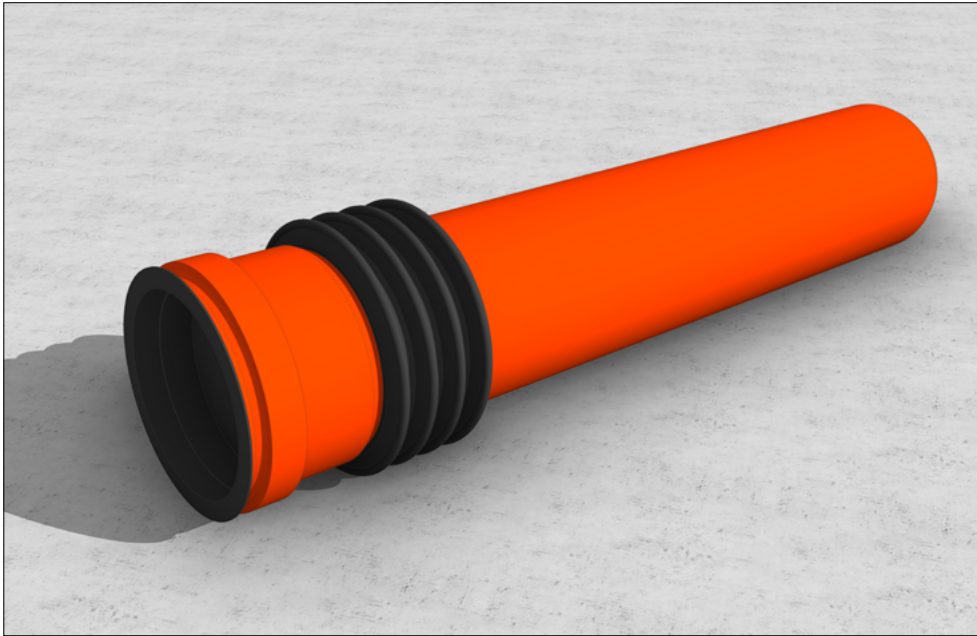
# KRASO<sup>®</sup>

SIMPLE + TIGHT



## KRASO<sup>®</sup> Floor Penetration Type BDF

### Installation instructions

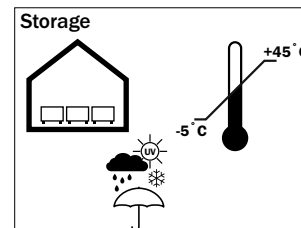
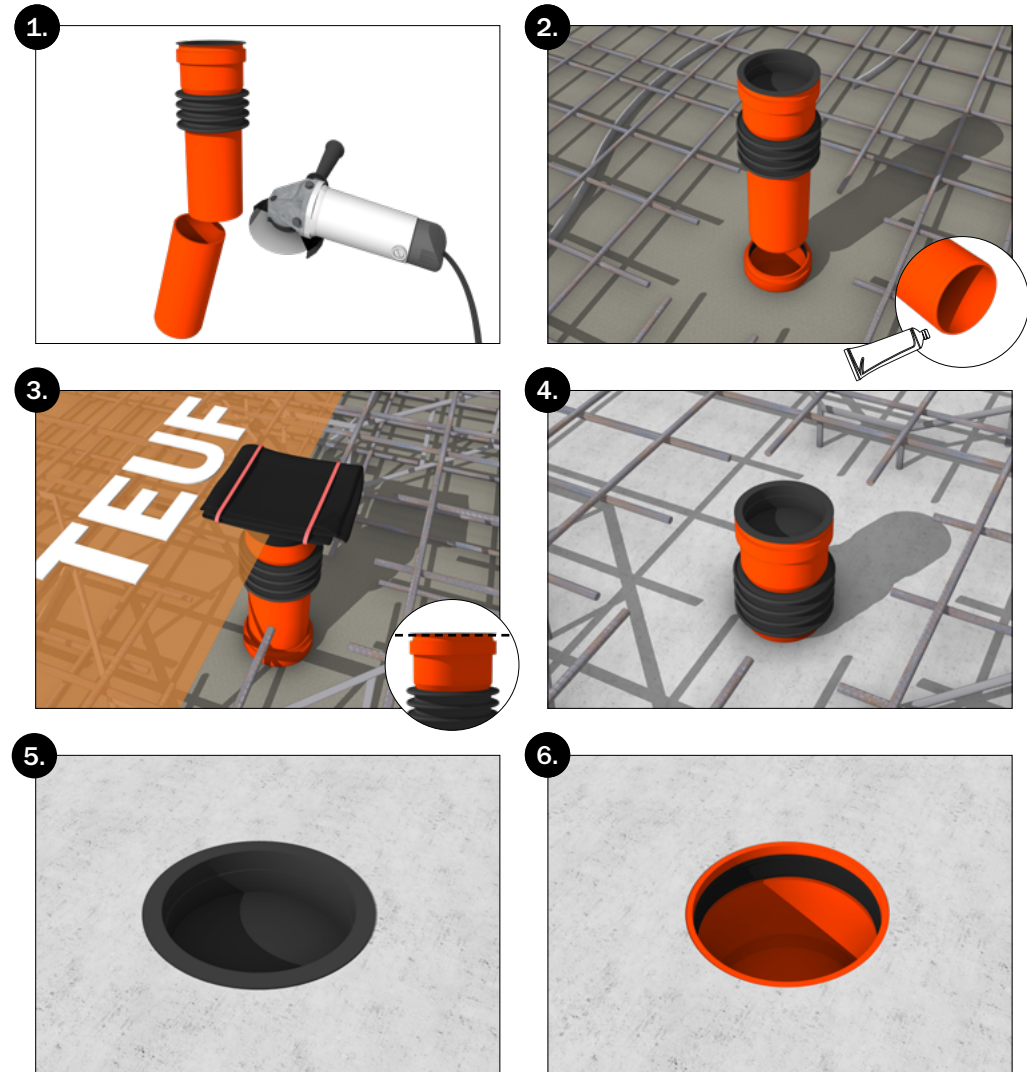


## KRASO® Floor Penetration Type BDF

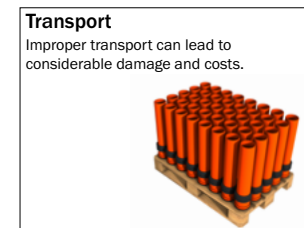
For connection to KG/HT pipes

| DafStB waterproof concrete guideline: stress class 1 + 2

1. Shorten **KRASO®** Floor Penetration Type BDF to the required length and chamfer the cut.
2. Apply lubricant to the **KRASO®** Floor Penetration Type BDF and insert into the main pipe.
3. Insert support cages and upper reinforcement. TEUF = top edge unfinished floor.
4. Concrete base plate.
5. Remove **KRASO®** Cover.
6. Clean the lip ring (if necessary).

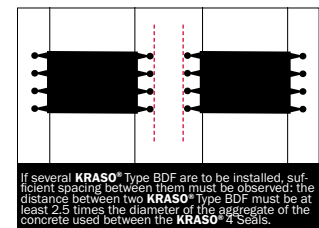


### Storage



### Transport

Improper transport can lead to considerable damage and costs.



If several **KRASO®** Type BDF are to be installed, sufficient spacing between them must be observed: the distance between two **KRASO®** Type BDF must be at least 2.5 times the diameter of the aggregate of the concrete used between the **KRASO®** 4 Seals.