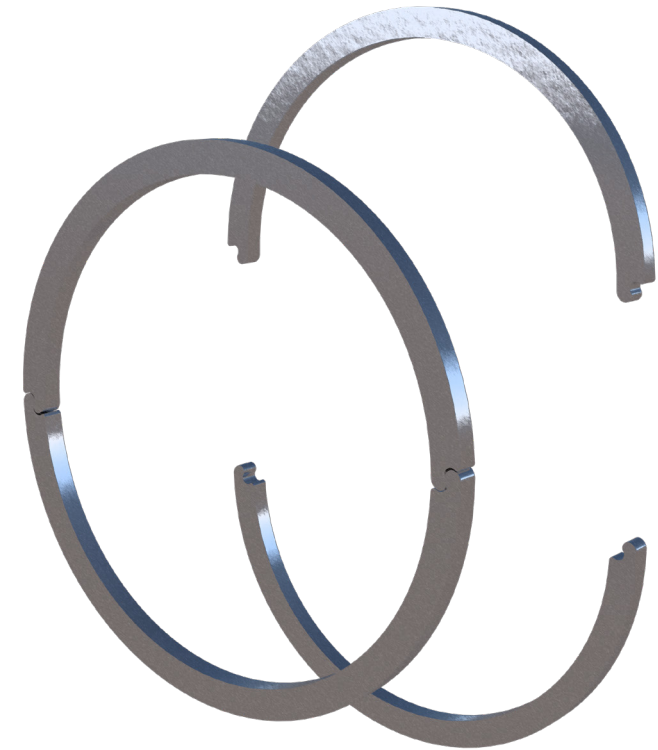


... for more than 40 years +

KRASO®

SIMPLE + TIGHT



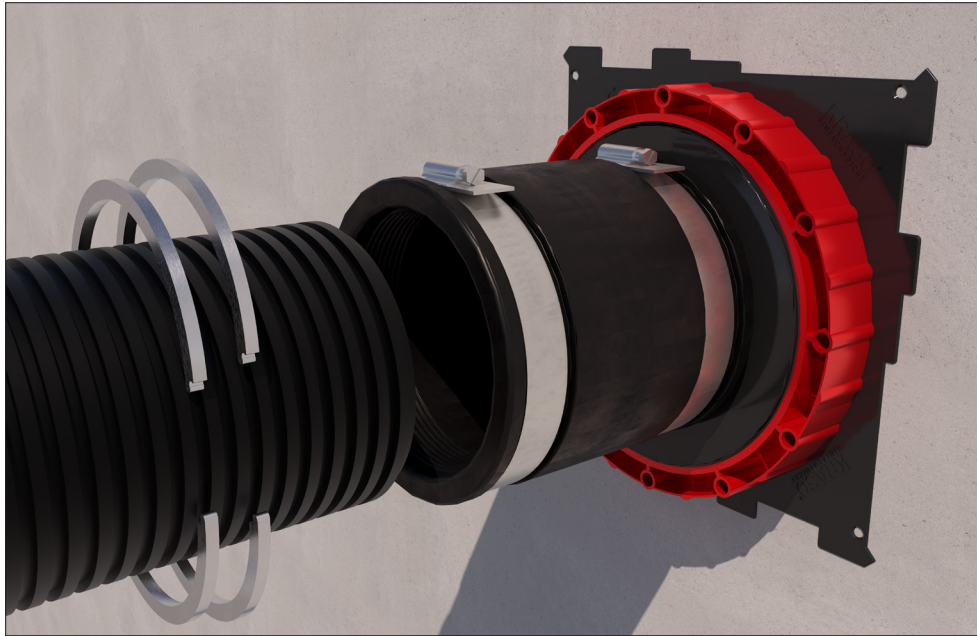
KRASO® Support Rings for corrugated pipes Installation instructions

All rights to the drawings and designs are the property of KRASO GmbH & Co. KG. •
Reproduction and distribution of the drawings as well as any other use require our written consent. •



KRASO GMBH & CO. KG
Baumannweg 1 | DE-46414 Rhede
T +49(0)28 72 - 95 35-0
info@kraso.de | **KRASO.de**

4.27-MA.EN-v1.0-03.26-RSc.DK



KRASO® Support Rings for corrugated pipes

For ribbed/corrugated cable protective hoses in combination with **KRASO®** System Covers KDS with hose adapter, for even contact pressure and to prevent deformation, non-corrosive stainless steel V2A

Installation situation in the illustration: cable protective hose in combination with **KRASO®** Support Rings for corrugated pipes and **KRASO®** System Cover KDS 150 with hose adapter 110.

1. Check that the connection between the cable protective hose and the hose adapter is fully functional.
2. Insert the cable protective hose into the hose adapter.
3. Mark the cable protective hose.
4. Pull the cable protective hose out of the hose adapter.
5. Place the **KRASO®** Support Rings for corrugated pipes on the cable protective hose and clip them into place.
Important: The **KRASO®** Support Rings for corrugated pipes must be installed in the area of the stainless steel bands.
6. Reinsert the cable protective hose into the hose adapter.
7. Tighten the stainless steel bands using a socket wrench (socket size 13).

