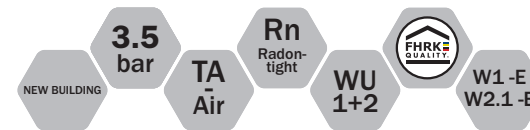
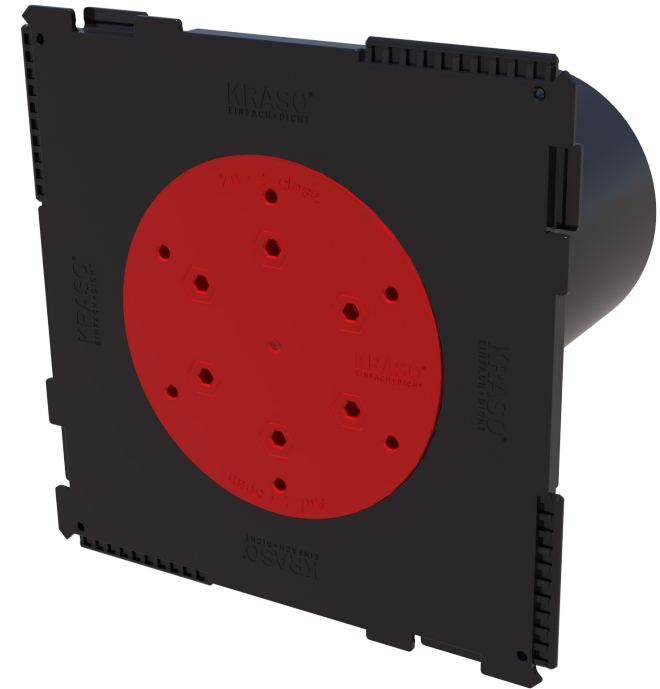


... for more than 40 years +

KRASO®

SIMPLE + TIGHT



KRASO®

Cable Penetration KDS 150 **MAX** single wall penetration

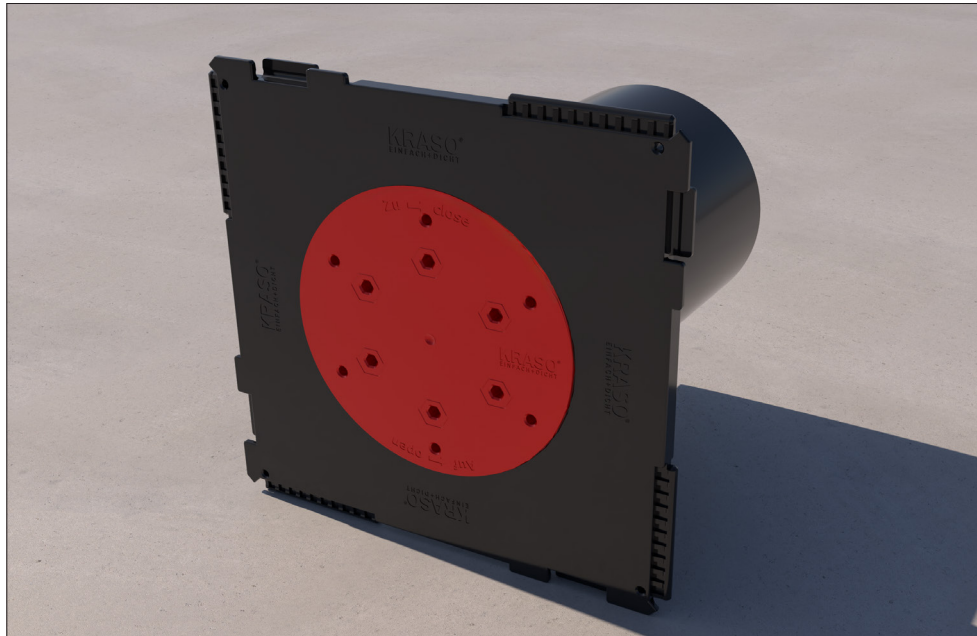
Installation instructions

All rights to the drawings and designs are the property of KRASO GmbH & Co. KG. •
Reproduction and distribution of the drawings as well as any other use require our written consent. •



KRASO GMBH & CO. KG
Baumannweg 1 | DE-46414 Rhede
T +49(0)28 72 - 95 35-0
info@kraso.de | **KRASO.de**

4.2.3-MA.EN-v1.0-06.26-RSc.DK



KRASO® Cable Penetration KDS 150 MAX single wall penetration

Cable penetration system for concreting, with gas- and water pressure tight surrounding KRASO® 3 Seal and KDS closure covers, with plug-in system on one side for forming packages, for later installation of media lines using a KRASO® System Sealing Insert (not included in the scope of supply) or for connecting empty pipe hoses using KRASO® System Cover (not included in the scope of supply).

| DafStB waterproof concrete guideline: stress class 1 + 2, KRASO® KDS 150 MAX with integrated trowel flange DIN 18533 W1 -E and W2.1 -E

1. Position the KRASO® Cable Penetration KDS 150 and nail it to the 4 holes in the frame.
2. Lay reinforcement.
3. Formwork and ensure sufficient distance from the tie points.
4. Concrete wall. The surrounding water pressure tight KRASO® 3 Seal must have sufficient concrete cover. To prevent segregation in the area of the penetration, the free fall height of the concrete must not exceed 1 m.*
5. Remove formwork.
6. Apply area sealing according to manufacturer's instructions. **Important:** When assembling the package, the sealing must also be applied between the penetrations (see the highlighted area in the detail).

