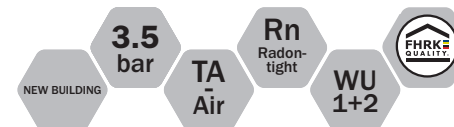
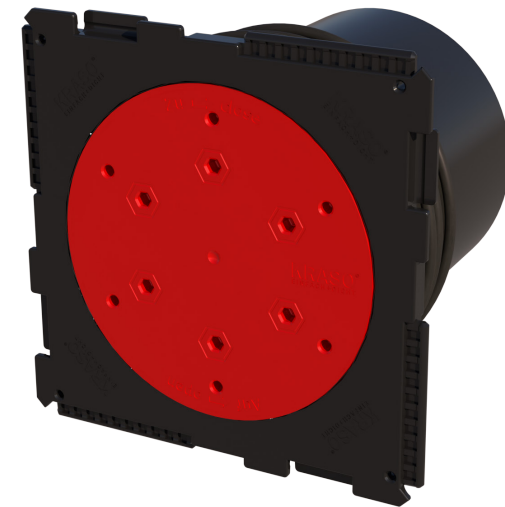


... for more than 40 years +

KRASO[®]
SIMPLE + TIGHT

All rights to the drawings and designs are the property of KRASO GmbH & Co. KG. •
Reproduction and distribution of the drawings as well as any other use require our written consent. •



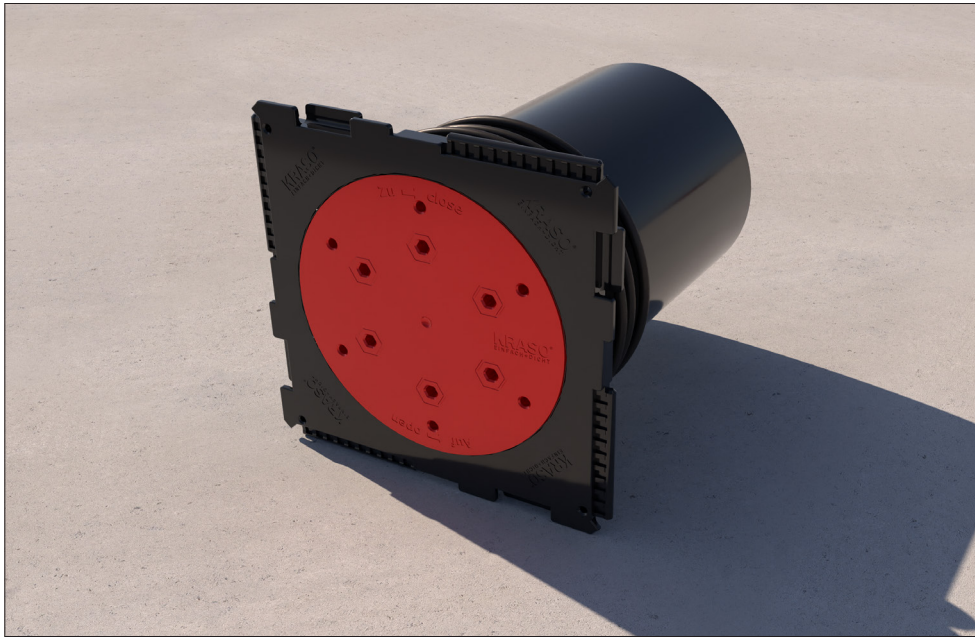
KRASO[®]

Cable Penetration KDS 150 single wall penetration Installation instructions



KRASO GMBH & CO. KG
Baumannweg 1 | DE-46414 Rhede
T +49(0)28 72 - 95 35-0
info@kraso.de | **KRASO.de**

4.2.1-MA.EN-v1.0-06.26-RSc.DK



KRASO® Cable Penetration KDS 150 single wall penetration

Cable penetration system for concreting, with gas- and water pressure tight surrounding **KRASO® 3 Seal** and KDS closure covers, with plug-in system on one side for forming packages, for later installation of media lines using a **KRASO® System Sealing Insert** (not included in the scope of supply) or for connecting empty pipe hoses using **KRASO® System Cover** (not included in the scope of supply).

| DafStB waterproof concrete guideline: stress class 1 + 2

1. Nail the **KRASO®** Cable Penetration KDS 150 single wall penetration to the 4 holes in the frame.
2. Lay reinforcement.
3. Formwork and ensure sufficient distance from the tie points.
4. Concrete wall. The surrounding water pressure tight **KRASO® 3 Seal** must have sufficient concrete cover. To prevent segregation in the area of the penetration, the free fall height of the concrete must not exceed 1 m.*
5. Remove formwork.

