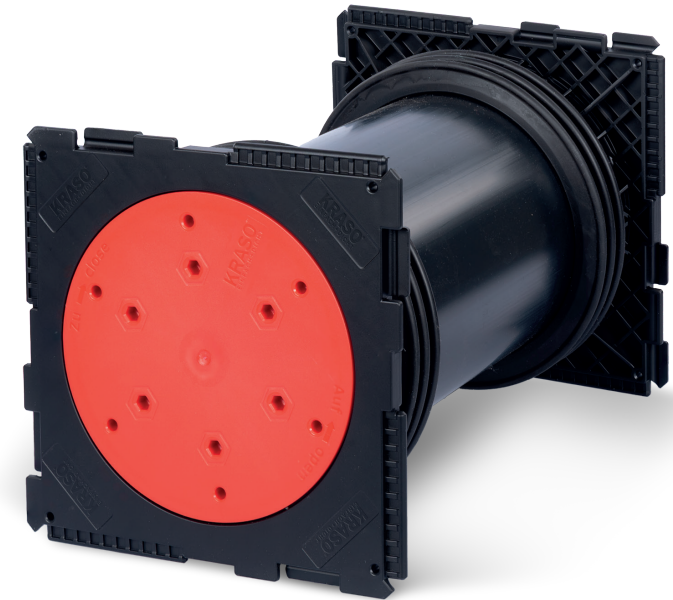


... for more than 40 years +

KRASO®

SIMPLE + TIGHT

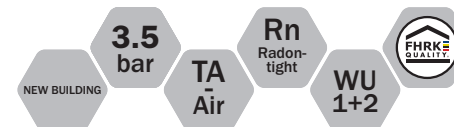


All rights to the drawings and designs are the property of KRASO GmbH & Co. KG. •
Reproduction and distribution of the drawings as well as any other use require our written consent. •



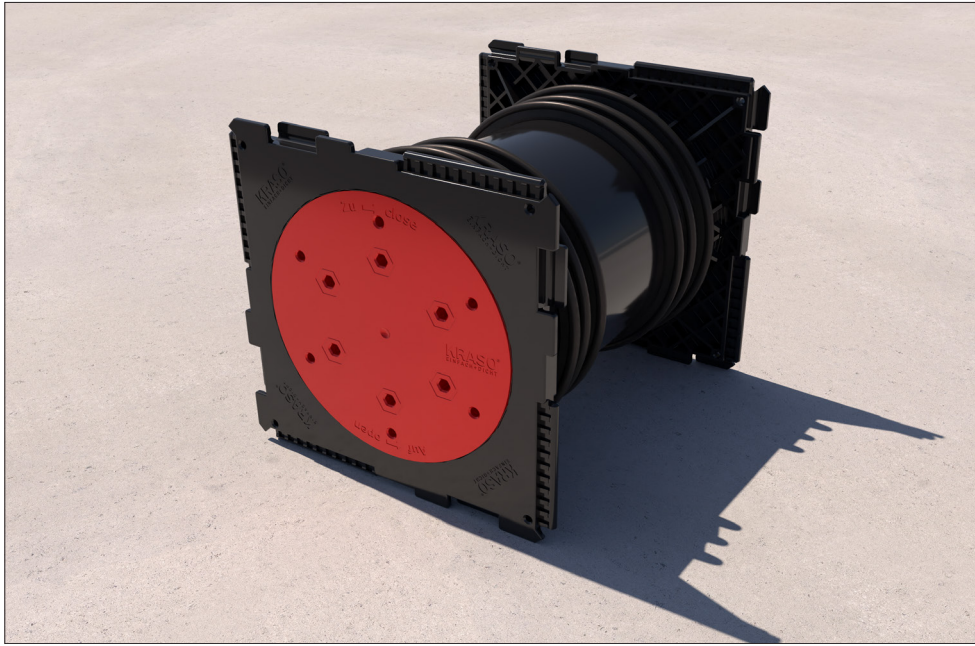
KRASO GMBH & CO. KG
Baumannweg 1 | DE-46414 Rhede
T +49(0)28 72 - 95 35-0
info@kraso.de | **KRASO.de**

4.1.1-MA.EN-v1.0-06.26-RSc.DK



KRASO®

Cable Penetration KDS 150 double wall penetration Installation instructions



KRASO® Cable Penetration KDS 150 double wall penetration

Cable penetration system for concreting, for in-situ concrete walls or precast walls, with double-sided gas- and water pressure tight surrounding **KRASO® 3 Seal**, with plug-in system on both sides for forming packages, for the later installation of media lines using a **KRASO® System Sealing Insert** (not included in the scope of supply) or for connecting empty pipe hoses using **KRASO® System Cover** (not included in the scope of supply). | **DafStB waterproof concrete guideline stress class 1 +2**

1. Align the **KRASO®** Cable Penetration KDS 150 and nail it to the four holes in the frame.
2. Lay reinforcement.
3. Formwork and ensure sufficient distance from the tie points.
4. Concrete wall. The surrounding water pressure tight **KRASO® 3 Seals** must have sufficient concrete cover. To prevent segregation in the area of the penetration, the free fall height of the concrete must not exceed 1 m.*
5. Remove formwork.

