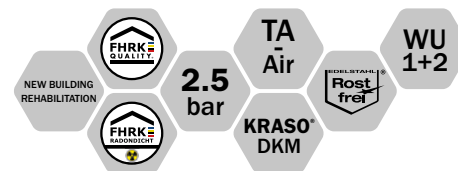


... for more than 40 years +

# KRASO®

SIMPLE + TIGHT



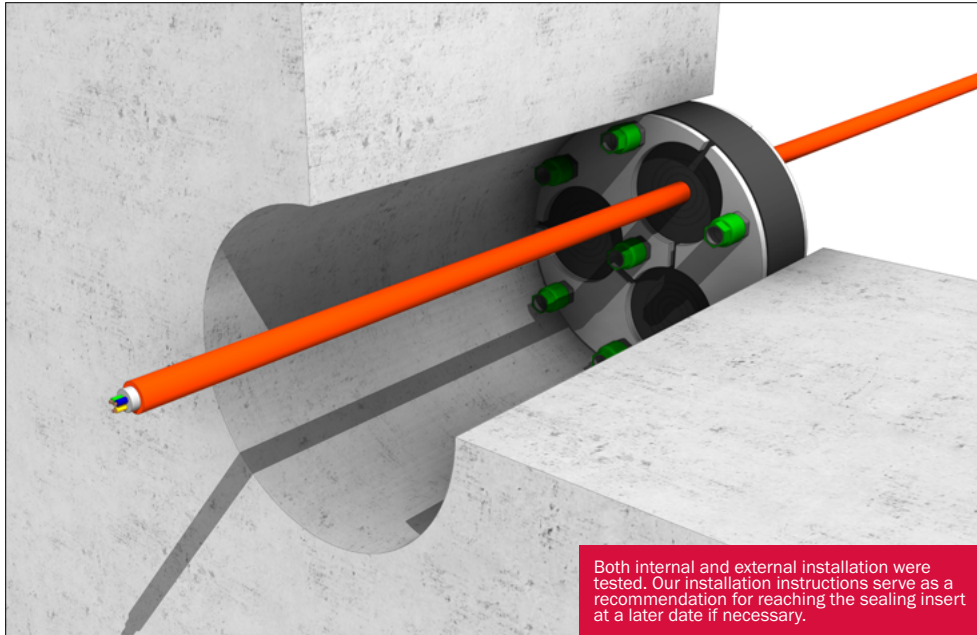
## KRASO® Sealing Insert Universal Multiple - split - Installation instructions

All rights to the drawings and designs are the property of KRASO GmbH & Co. KG. •  
Copying and distribution of the drawings as well as any other use require our written consent. •



**KRASO GMBH & CO. KG**  
Baumannweg 1 | DE-46414 Rhede  
T +49(0) 28 72 - 95 35 - 0  
info@kraso.de | **KRASO.de**

1.5.0-MA.EN-v1.0-06.25-RSc.DK



## KRASO® Sealing Insert Universal Multiple - split -

for the installation of several media lines/cables, split design for retrofit installation

| DafStB waterproof concrete guideline: stress class 1 + 2

Preparation

Measure the media line. Remove the plug and push the rubber ring out to the rear by hand. Cut the universal rubber to the right size.

1. Clean the core drilling. If necessary, treat the core drilling with **KRASO®** Core Drilling Sealant.
2. Insert the media line into the core drilling. Push the **KRASO®** Sealing Insert over the media line.

### Installation situation in-situ concrete:

3. The **KRASO®** Sealing Insert is installed on the water-bearing side.  
We recommend: the Torque Control Nut **KRASO®** DKM points to the inside of the building.

### Installation situation precast wall:

4. The **KRASO®** Sealing Insert is installed on the water-bearing side in the middle of the joint precast/in-situ concrete. The Torque Control Nut **KRASO®** DKM points to the inside of the building.

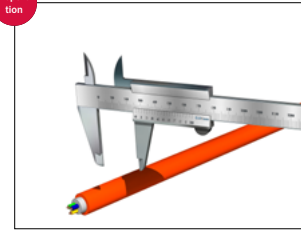
### Installation situation retrofit installation:

5. The installation is carried out as follows: open the **KRASO®** Sealing Insert and push it around the existing media line then ...  
... close it and push it into the core drilling.
6. **Important:** in the case of precast walls it is installed in the middle of the joint precast/in-situ concrete on the water-bearing side (see illustration point 5.).
7. Tighten the Torque Control Nuts **KRASO®** DKM crosswise step by step.  
Tighten the Torque Control Nuts **KRASO®** DKM until it audibly "clicks".

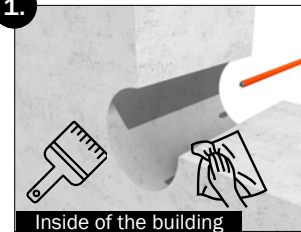
\*

Installation situation outside of building.

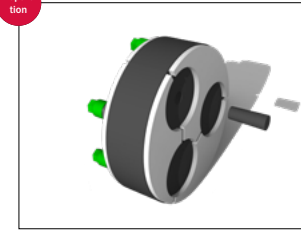
Preparation



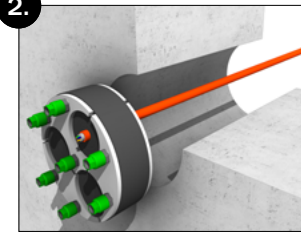
1.



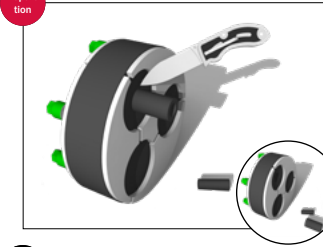
Preparation



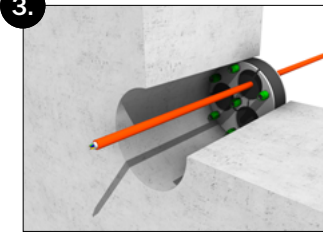
2.



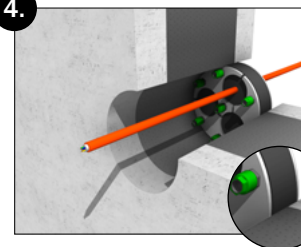
Preparation



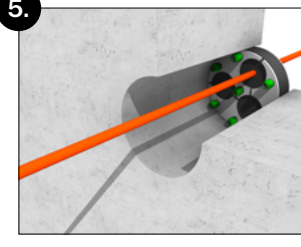
3.



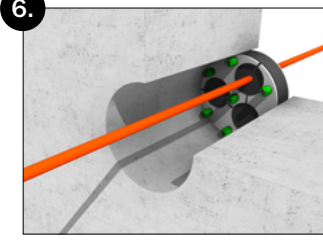
4.



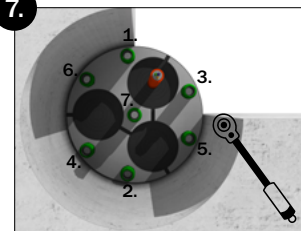
5.



6.



7.



\*

