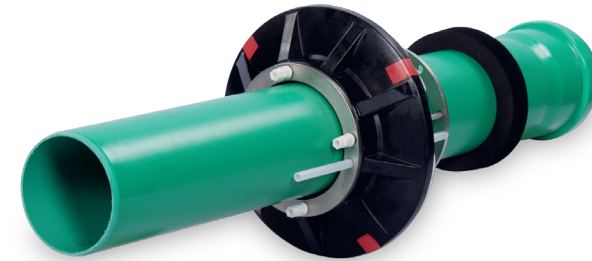


... for more than 40 years +

KRASO®

SIMPLE + TIGHT

All rights to the drawings and designs are the property of KRASO GmbH & Co. KG. •
Reproduction and distribution of the drawings as well as any other use require our written consent. •



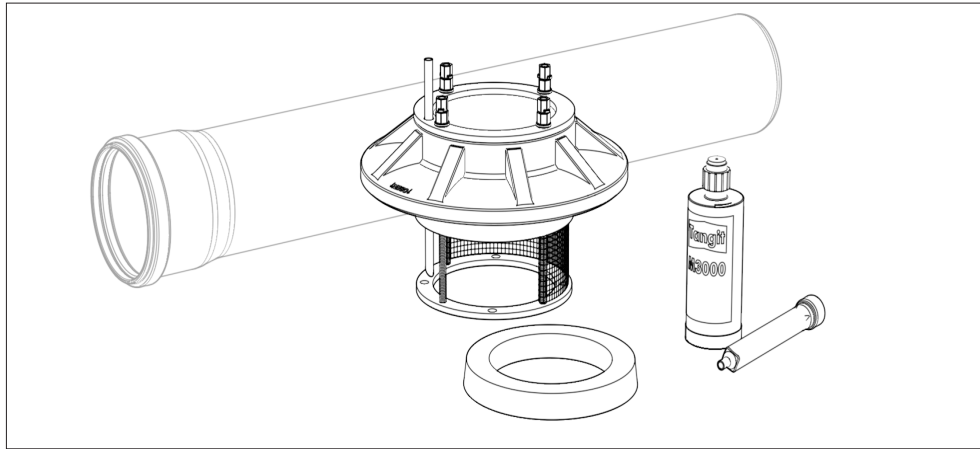
KRASO® Inject FR

Installation instructions



KRASO GMBH & CO. KG
Baumannweg 1 | 46414 DE-Rhede
T +49(0)28 72 - 95 35-0
info@kraso.de | **KRASO.de**

1.27-MA.EN-v1.0-03.26-RSc.DK



KRASO® Inject FR

Wall penetration for the connection of KG/KG 2000 pipes, with injection system.
 | DIN 18533 W2.1 – E, DafStB waterproof concrete guideline: stress class 1 + 2

1. Creating a hole. See image for minimum distances and core drilling diameters
2. Preparation of the house connection. Set control mark.
A - position of the control mark **B** - wall thickness **C** - external sealing **55 mm**.
 Position of the control mark = wall thickness **B** + external sealing **C** 55 mm.
3. Slide the end cap onto the main pipe.
4. Push the main pipe from inside the building into the core drilling/casing.
5. Connection options variant 1/ variant 2/ variant 3.
6. Remove protective film.
7. Push the external sealing up to the external wall. Before fitting the external seal, apply lubricant to the contact surfaces. To align the external sealing, the butyl tape must not touch the external wall.
8. Align the external seal and the main pipe in accordance with the marking on the large ring ('top') and the markings on the main pipe.
9. Push the external sealing up to the external wall, noting the position of the control mark and correcting it if necessary.
10. Unscrew the cap of the resin cartridge (Tangit M 3000, 300 ml) and screw the cartridge into the static mixer.
11. Connect the static mixer firmly to the filling pipe as far as it will go.
12. Remove the bottom cap of the resin cartridge. Insert the resin cartridge into the cartridge gun.
- 13.* Tightening the IDK nuts. For final assembly, tighten the 4 or 5 nuts (spanner size 10 or 13). Continue until the upper nuts come off.
14. Connection of the main pipe



Safety instructions: protect the house connection from damage, moisture and contamination during installation. Check all individual parts for possible damage. Only undamaged parts may be installed. When installing the house connection, the relevant regulations of the professional associations, the VDE regulations, the relevant national safety and accident prevention regulations and the guidelines (work and process instructions) of your company must be observed. We expressly point out that no warranty is provided for any consequential damage that may occur if the information in the installation instructions is not followed, if our products are used improperly or if they are combined with third-party products.



Danger: expansion resin: Tangit M3000 (300 ml). Contains diphenylmethane-4,4'-diisocyanate. Observe the manufacturer's instructions.
Recycling/disposal: empty packaging can be disposed of via the dual system (yellow bin/bag in Germany, other countries: plastic recycling disposal). Cured polyurethane residues can be disposed of with household waste/commercial waste.



1. $\geq 60 \text{ mm}$ a b $\geq 60 \text{ mm}$

KRASO® Inject FR DN 110
 core drilling diameter b: 149-153 mm
KRASO® Inject FR DN 160
 core drilling diameter b: 199-203 mm

2. wall end cap
external sealing **A**
B **C**

3.

4.

5. variant 1
variant 2
variant 3

6.

7.

8.

9.

10.

Please observe the manufacturer's safety data sheet. Processing temperature: +5°C up to +30°C, optimum: +15°C up to +25°C

11.

12.

During curing (>10 min), do not separate the complete resin system from **KRASO® Inject FR**.

13.*

14.

A **B** **C**

Proceed alternately; crosswise, one turn in at least 3 intervals (A>B>C).