

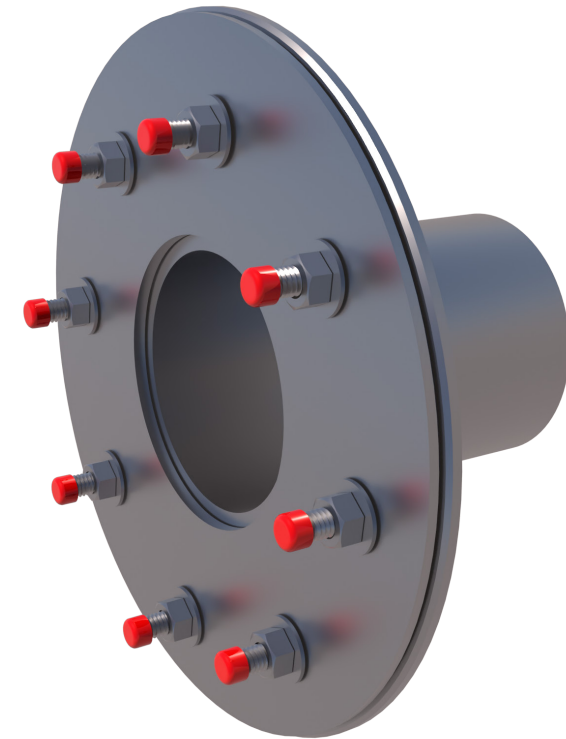
... for more than 40 years +

KRASO[®]
SIMPLE + TIGHT

Technical details

Type of sealing sheets	Torque for M12 (Nm)	Torque for M20 (Nm)
KMB (polymer-modified thick coatings))	30	100
Uncoated bitumen sheets in accordance with DIN 52129-R	12	50
PIB glued with bitumen	12	50
Bitumen sheets and polymer-modified bitumen sheets in accordance with table 1 of DIN 18533-2:2017-06, with a glass fibre reinforcement	15	65
Bitumen sheets and polymer-modified bitumen sheets in accordance with table 1 of DIN 18533-2:2017-06 with a reinforcing layer of polyester fleece or copper tape	20	80
DIN 52129 500 N + 1 x Cu	20	1.: 100 2.: 80 3.: 80
ECB sheets, PVC-P sheets, elastomer sheets and EVA sheets in accordance with table 3 of DIN 18533-2:2017-06 glued with bitumen	20	80
DIN 52129 R 500 N + 2 x Cu	30	1.: 120 2.: 100 3.: 80
Plastic seals in accordance with table 3 of DIN 18533-2:2017-06, laid loosely	30	100
When using KRASO [®] Supplements KZU ED/DD	30	80
Torques in accordance with DIN 18533-1:2017-06 table A2 and the torque guidelines provided by the sheet manufacturers for fixed-loose flange constructions		

All rights to the drawings and designs are the property of KRASO GmbH & Co. KG. •
Reproduction and distribution of the drawings as well as any other use require our written consent. •

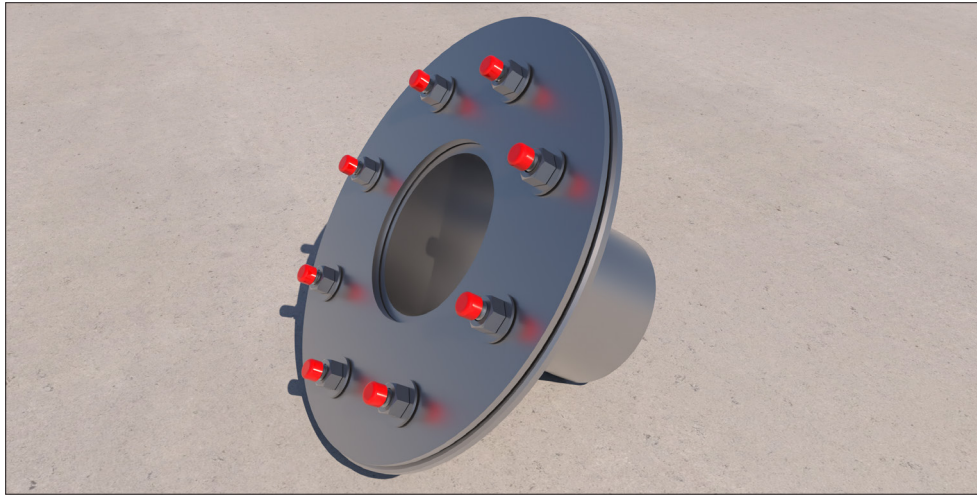


KRASO[®] Casing Type FL/ZE -
fixed-loose flange for concreting
Installation instructions



KRASO GMBH & CO. KG
Baumannweg 1 | DE-46414 Rhede
T +49 (0) 28 72 - 95 35-0
info@kraso.de | **KRASO.de**

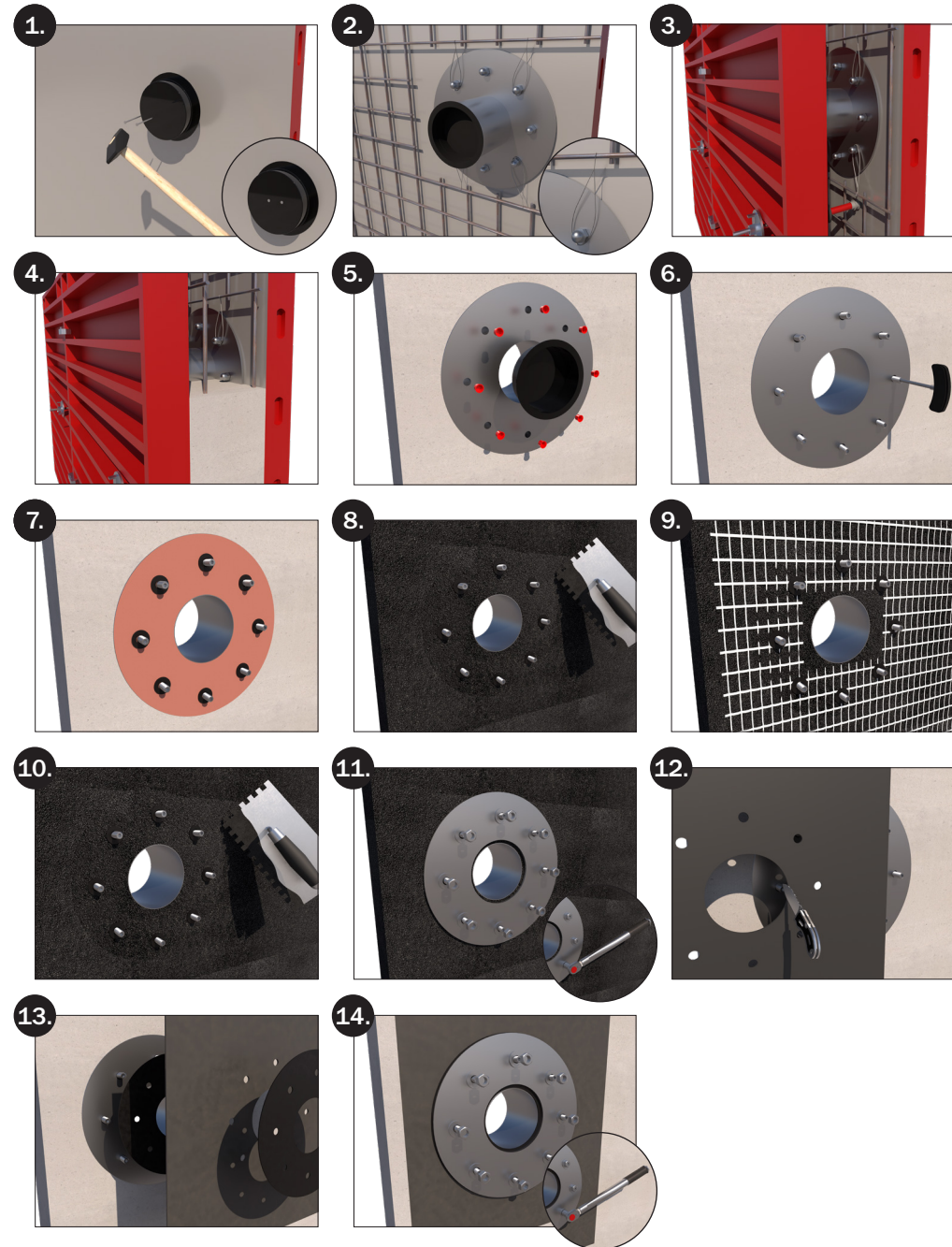
1.20-MA.EN-v1.0-06.26-RSc.DK



KRASO® Casing Type FL/ZE - fixed-loose flange for concreting

Fixed-loose flange for concreting, with casing, for installation of media pipes using a sealing insert (not included in the scope of supply), for buildings with exterior sealing ("black tank") against pressing / non-pressing water according to DIN 18533. Available in non-corrosive stainless steel V2A or electrogalvanised with plastic casing, each with or without special coating. ID = InternalDiameter
 | DIN 18533 W2.1 - E and W2.2 - E

1. Nail on the **KRASO®** Cover using a hammer.
 2. Place the **KRASO®** Casing Type FL/ZE on the **KRASO®** Cover. Lay the reinforcement. If necessary: fix the **KRASO®** Casing Type FL/ZE to the reinforcement.
 3. Lay second layer of reinforcement. Formwork and ensure sufficient distance to the tie points. Make sure the concrete covers the area of the penetration.
 4. Concrete wall.
 5. Remove the formwork and **KRASO®** Cover and thread protective plug.
 6. Screw in the threaded bolts delivered with the socket wrench.
- Point 7. - 11. thick coating**
7. Slide the spacers over the bolts until they rest against the special coating.
 8. Apply the first layer of thick coating.
 9. If necessary: apply a fabric fleece.
 10. Apply the second layer of thick coating.
 11. Install the loose-flange, washers and nuts. Use a torque wrench.
- Point 12. - 14. sealing sheets**
12. Cut out the sealing sheet in the area of the bolts and the **KRASO®** Casing Type FL/ZE.
 13. If necessary, fit the supplements (optionally available) and the sealing sheet to the fixed-flange in accordance with the manufacturer's instructions.
 14. Install the loose-flange, washers and nuts. Use a torque wrench.



The tightening torque for the loose-flange is specified in the DIN (see table on the reverse). The torque for the supplements is as specified by the manufacturer of the relevant sealing sheet.

