

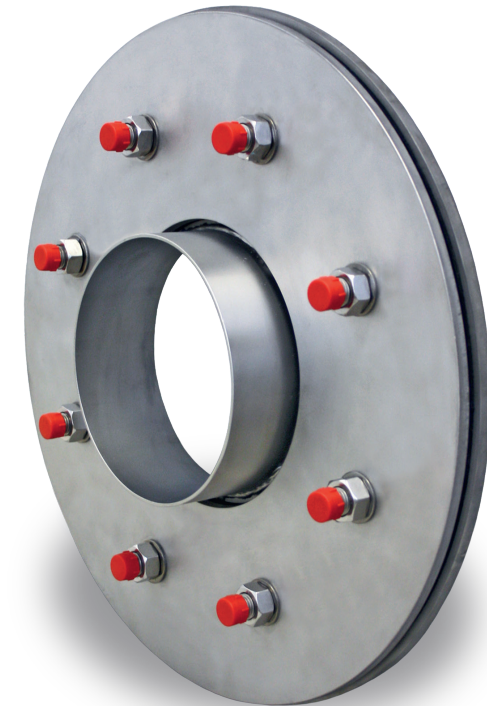
... for more than 40 years +

KRASO[®]
SIMPLE + TIGHT

Technical details

Type of sealing sheets	Torque for M12 (Nm)	Torque for M20 (Nm)
KMB (polymer-modified thick coatings)	30	100
Uncoated bitumen sheets in accordance with DIN 52129-R	12	50
PIB glued with bitumen	12	50
Bitumen sheets and polymer-modified bitumen sheets in accordance with table 1 of DIN 18533-2:2017-06, with a glass fibre reinforcement	15	65
Bitumen sheets and polymer-modified bitumen sheets in accordance with table 1 of DIN 18533-2:2017-06, with a reinforcing layer of polyester fleece or copper tape	20	80
DIN 52129 500 N + 1 x Cu	20	1,100 2,80 3,80
ECB sheets, PVC-P sheets, elastomer sheets and EVA sheets acc. to table 3 of DIN 18533-2:2017-06 glued with bitumen	20	80
DIN 52129 R 500 N + 2 x Cu	30	1,120 2,100 3,80
Plastic seals acc. to table 3 of DIN 18533-2:2017-06, laid loosely	30	100
When using KRASO [®] supplements KZU ED/DD	30	80
Torques acc. to DIN 18533-1:2017-06 table A2 and the torque guidelines provided by the sheet manufacturers for fixed-loose flange constructions		

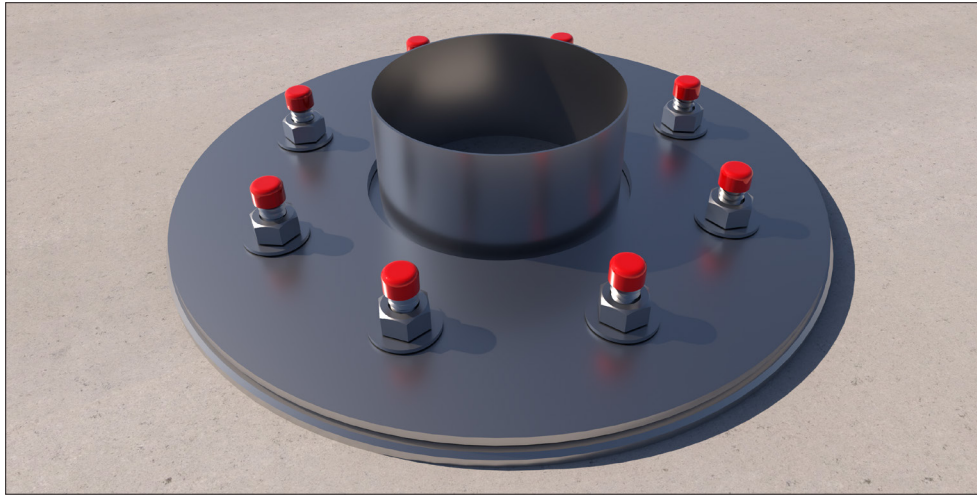
All rights to the drawings and designs are the property of KRASO GmbH & Co. KG. •
Reproduction and distribution of the drawings as well as any other use require our written consent. •



KRASO[®] Casing Type FL/ZA - fixed-loose flange for dowel-fixing Installation instructions



KRASO GMBH & CO. KG
Baumannweg 1 | DE-46414 Rhede
T +49(0)28 72 - 95 35-0
info@kraso.de | **KRASO.de**



KRASO® Casing Type FL/ZA - fixed-loose flange for dowel-fixing

Fixed-loose flange for dowel-fixing, with casing, for installation of media pipes using a sealing insert (not included in the scope of supply), for buildings with exterior sealing ("black tank") according to DIN 18533. Available in non-corrosive stainless steel V2A or electrogalvanised, each with or without special coating

ID = InternalDiameter

| DIN 18533 W1-E and W2.2-E

1. Remove the loose-flange.
2. Position fixed-flange.
3. Mark dowel holes.
4. Drill dowel holes.
5. Install the fixed-flange and secure it using the dowels.

Point 6. - 10. thick coating

6. Slide the spacers over the bolts until they rest against the special coating.
7. Apply the first layer of thick coating.
8. If necessary: apply a fabric fleece.
9. Apply the second layer of thick coating.
10. Install the loose-flange, washers and nuts. Use a torque wrench.

Point 11. - 13. sealing sheets

11. Cut out the sealing sheet in the area of the bolts and the KRASO® Casing Type FL/ZA.
12. If necessary, fit the supplements (optionally available) and the sealing sheet to the fixed-flange in accordance with the manufacturer's instructions.
13. Install the loose-flange, washers and nuts. Use a torque wrench.

The tightening torque for the loose-flange is specified in the DIN (**see table on the reverse**).
The torque for the supplements is as specified by the manufacturer of the relevant sealing sheet.

