

... for more than 40 years +

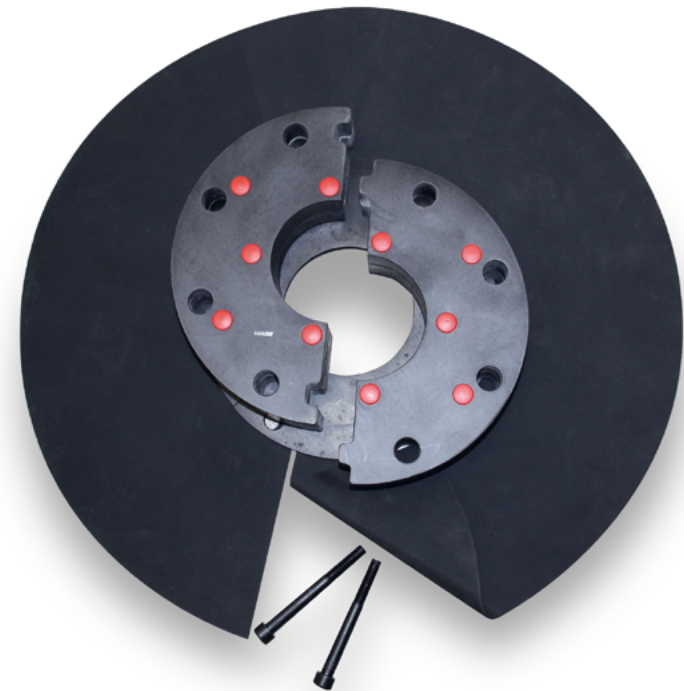
KRASO[®]
SIMPLE + TIGHT

All rights to the drawings and designs are the property of KRASO GmbH & Co. KG. •
Reproduction and distribution of the drawings as well as any other use require our written consent. •

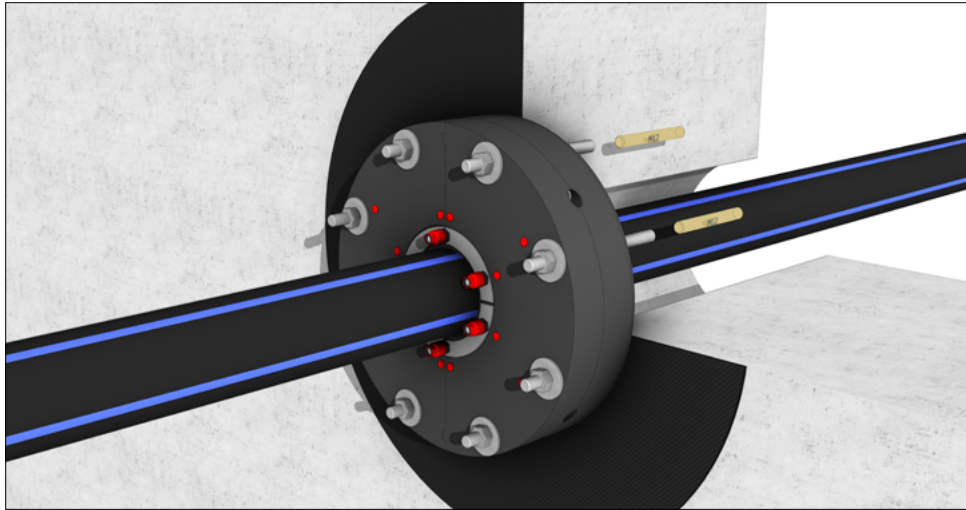


KRASO GMBH & CO. KG
Baumannweg 1 | DE-46414 Rhede
T +49(0) 28 72 - 95 35 - 0
info@kraso.de | **KRASO.de**

1.14.2-MA.EN-v1.0-07.25-RSc.DK



KRASO[®] Plastic Flange Plate Type KFP
- split - foil flange -
Installation instructions



KRASO® Plastic Flange Plate Type KFP - split - foil flange -

For installation of pipes or cables using a sealing insert (not included in the scope of supply), ID = Internal-Diameter | DafStB waterproof concrete guideline: stress class 1 + 2, with foil flange DIN 18533 W1 -E and W2.1 -E

1. Initial situation: previously installed media line not correctly sealed.
2. Push **KRASO®** Sealing Insert - split and **KRASO®** Plastic Flange Plate Type KFP - split - over the existing media line, centre and align in the middle.
3. Mark the drilling positions.
4. Pre-drill with a Ø 6 mm drill bit, then drill to a depth of 11 cm with a Ø 14 mm drill bit. Blow out all holes thoroughly.
Insert one shear connector cartridge per hole. Screw in the M12 threaded rods using the adapter screw. Observe the curing time of the shear connector cartridges according to the manufacturer's instructions!
5. Apply and spread **KRASO®** PU 50.
6. Slip on the foil flange and press on. Fill the joint with **KRASO®** PU 50.
7. Slip on the EPDM seal and press on. Fill the joint with **KRASO®** PU 50.
8. Apply **KRASO®** PU 50 on both sides of any half.
9. Place both halves around the media line and put them together. The back must be flush with each other. Insert the M10 screws on the sides and tighten them hand-tight.
10. Spread **KRASO®** PU 50 along the joint. Push the **KRASO®** Plastic Flange Plate Type KFP - split - over the threaded rods in an offset position to the joint of the EPDM seal.
11. Insert the washers and nuts and tighten lightly by hand. Tighten the M10 screws on the side with an 8 mm Allen key to 40 Nm.
12. Smooth out any excess **KRASO®** PU 50 at the top and bottom of the inner joint.
13. Install the **KRASO®** Sealing Insert. Tighten the nuts of the **KRASO®** Plastic Flange Plate Type KFP crosswise with a torque of 20 Nm. Tighten the Torque Control Nuts **KRASO®** DKM crosswise step by step. Tighten the Torque Control Nuts **KRASO®** DKM until you hear a "click".
- 14.

