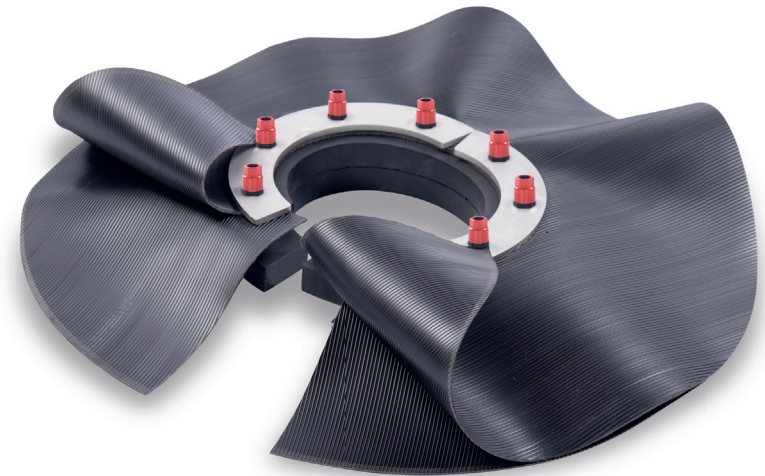


... for more than 40 years +

KRASO®

SIMPLE + TIGHT



All rights to the drawings and designs are the property of KRASO GmbH & Co. KG. •
Reproduction and distribution of the drawings as well as any other use require our written consent. •
The regulations of the currently valid abP* (general building authority test certificate) generally apply.

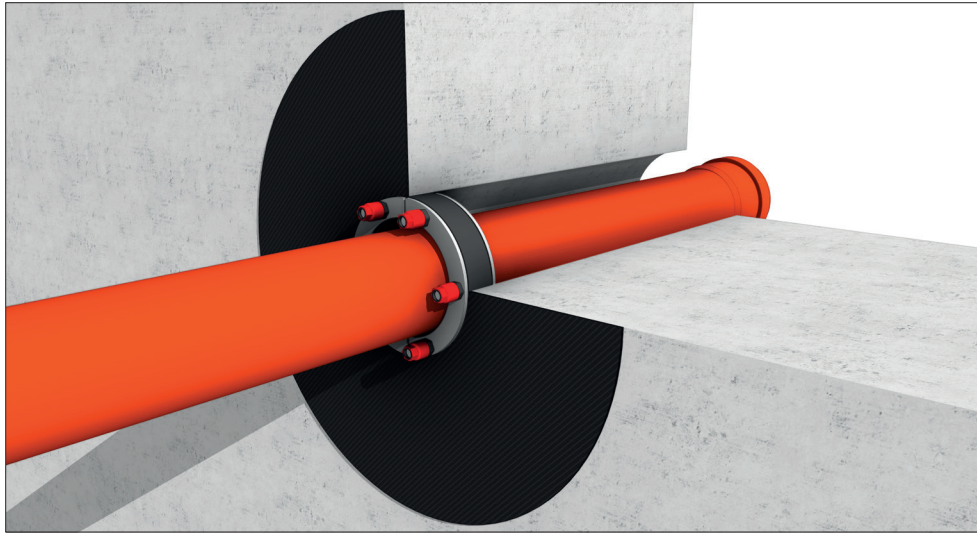


KRASO® Foil Clamping Flange Type FKF – in the core drilling - split Installation instructions



KRASO GMBH & CO. KG
Baumannweg 1 | D-46414 Rhede
T +49 (0) 28 72 - 95 35 - 0
info@kraso.de | **KRASO.de**

1.11.4-MA.EN-v1.0-03.25-JnH.DK



KRASO® Foil Clamping Flange Type FKF – in the core drilling - split

for the sealing of media of all kinds of materials in the core drilling, with foil flange 1.2 mm, according to DIN 16937, oil- and bitumen resistant, surrounding approx. 15 cm, 30 mm seal | DIN 18533 W1 -E und W2.1 -E

1. Initial situation: already installed media line is not sealed. Remove dirt, dripping water and remains of old sealing.
2. Push the **KRASO®** Foil Clamping Flange over the pipe into the core drilling.
3. Mark the foil flange.
4. Remove the **KRASO®** Foil Clamping Flange and apply and spread **KRASO®** PU 50.
5. Slide the **KRASO®** Foil Clamping Flange over the pipe.
6. Position the rear foil between sealing and front foil.
7. Join the foil flange under the stainless steel ring.
8. Push the **KRASO®** Sealing Insert into the core drilling.
Press the rear foil flange using your hands and join it to full length.
9. Press the foil flange evenly from the inside to the outside using the pressure roller.
10. Apply **KRASO®** PU 50 along the rear split seam.
11. Apply **KRASO®** PU 50 on the backside of the rear foil and the front split seam.
12. Press the front foil flange using your hands and join it to full length.
13. Press the front foil flange evenly from the inside to the outside using the pressure roller.
14. Tighten the Torque Control Nuts **KRASO®** DKM crosswise step by step.
Tighten the Torque Control Nuts **KRASO®** DKM until the "CLICK" sound is heard.
15. Apply the bituminous (black) sealing according to the manufacturer's instructions.

