

... for more than 40 years +

KRASO®

SIMPLE + TIGHT



All rights to the drawings and designs are the property of KRASO GmbH & Co. KG. •
Copying and distribution of the drawings as well as any other use require our written consent. •



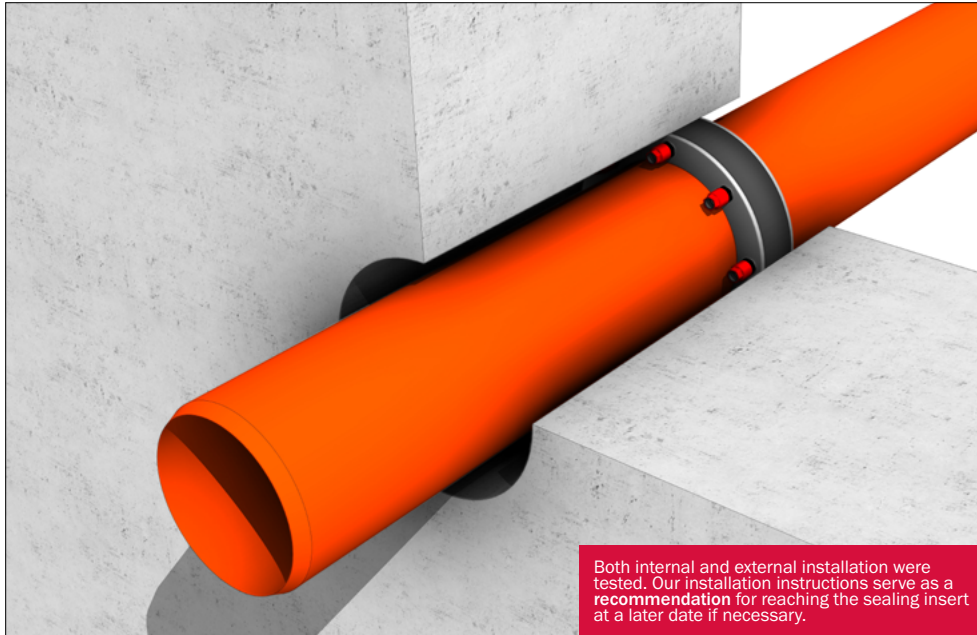
KRASO® Sealing Inserts

Installation instructions



KRASO GMBH & CO. KG
Baumannweg 1 | DE-46414 Rhede
T +49(0) 28 72 - 95 35 - 0
info@kraso.de | **KRASO.de**

1.0.1-MA.EN-v1.0-06.25-RSc.DK



KRASO® Sealing Inserts

For installation of pipes, Torque Control Nut **KRASO® DKM**, non-corrosive stainless steel, for core drillings or casings

[DafStB waterproof concrete guideline: stress class 1 + 2

UNIDD

Remove cover. Push the rubber ring out to the rear by hand. Cut the universal rubber to the right size.

1. Clean core drilling.
2. If necessary, treat the core drilling with **KRASO®** Core Drilling Sealant.
3. Insert the media line into the core drilling. Push the **KRASO®** Sealing Insert over the media line.

Installation situation in-situ concrete:

4. The **KRASO®** Sealing Insert is installed on the water-bearing side. **We recommend:** the Torque Control Nut **KRASO® DKM** points to the inside of the building.

Installation situation precast wall:

5. The **KRASO®** Sealing Insert is installed on the water-bearing side in the middle of the joint precast/in-situ concrete. The Torque Control Nut **KRASO® DKM** points to the inside of the building.

Installation situation retrofit installation:

6. The installation is carried out as follows: open the **KRASO®** Sealing Insert - split - and push it around the existing media line from the outside of the building.

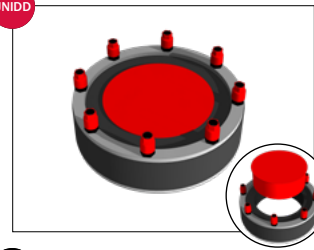
Close the **KRASO®** Sealing Insert - split - and insert it into the core drilling.

7. **Important:** in the case of precast walls it is installed in the middle of the joint precast/in-situ concrete on the water-bearing side (see illustration point 5.).

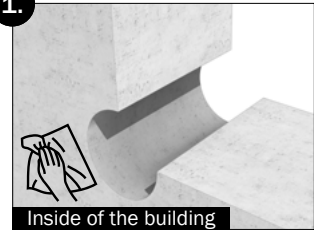
Tighten the Torque Control Nuts **KRASO® DKM** crosswise step by step.

8. Tighten the Torque Control Nuts **KRASO® DKM** until you hear a “click”.

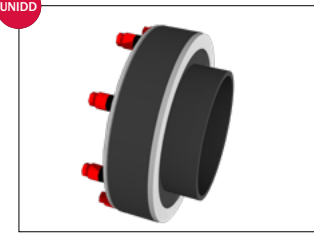
UNIDD



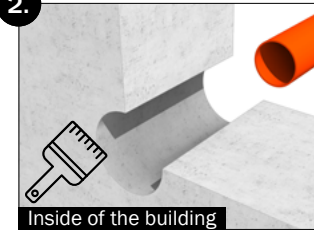
1.



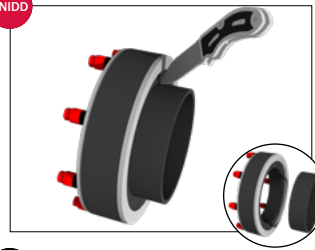
UNIDD



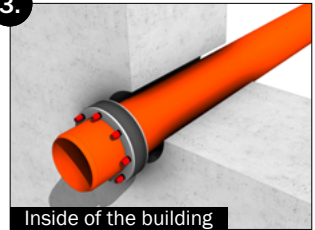
2.



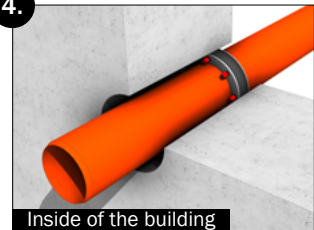
UNIDD



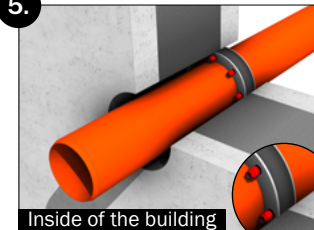
3.



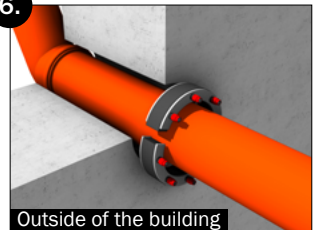
4.



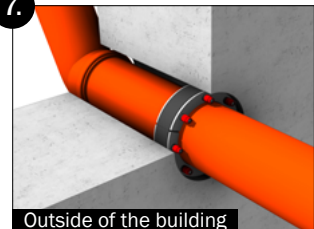
5.



6.



7.



8.

