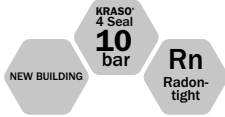


## TECHNICAL DATA SHEET



### KRASO® Slip-on Sleeve

#### Application areas

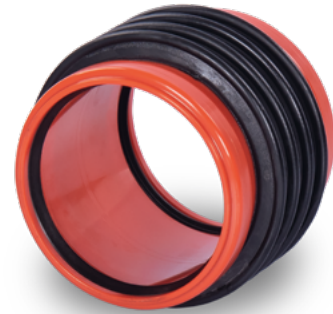
For installation in waterproof concrete walls for KG/HT pipes.

#### Technical details

- + Dimensionally and pressure-resistant solid wall material: low abrasion, easy installation even at low temperatures
- + In accordance with DIN EN 1401
- + Temperature resistant up to 60 °C

#### Tests

- + **KRASO® 4 Seal** - MPA-tested up to 10 bar!
- + IAF-tested: radon-tight!
- + DafStB waterproof concrete guideline: stress class 1 + 2

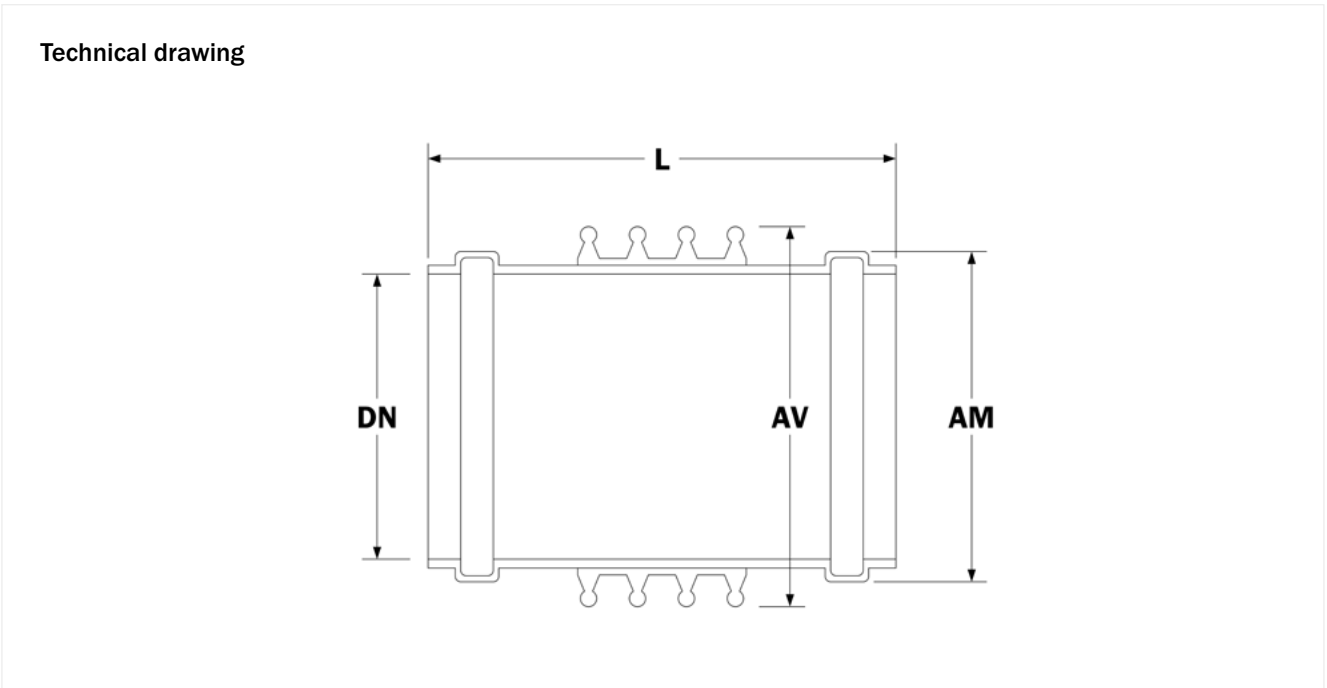


#### Material

Sleeve	PVC
4 seal	PVC
Lip seal	SBR (for KG)

## TECHNICAL DATA SHEET

### KRASO<sup>®</sup> Slip-on Sleeve



**DN** = nominal width | **L** = length | **AM** = sleeve external | **AV** = external diameter 4 seal

Item	DN (mm)	L (mm)	AM (mm)	AV (mm)	Weight (kg)	Item no.
Slip-on Sleeve	110	125	~127	~144	0.5	KM110
	125	138	~144	~159	0.6	KM125
	160	172	~181	~196	1.0	KM160
	200	212	~223	~237	1.2	KM200
	250	250	~284	~290	2.3	KM250
	315	293	~352	~358	4.3	KM315
	400	324	~450	~447	6.8	KM400
	500	362	~558	~552	12.0	KM500